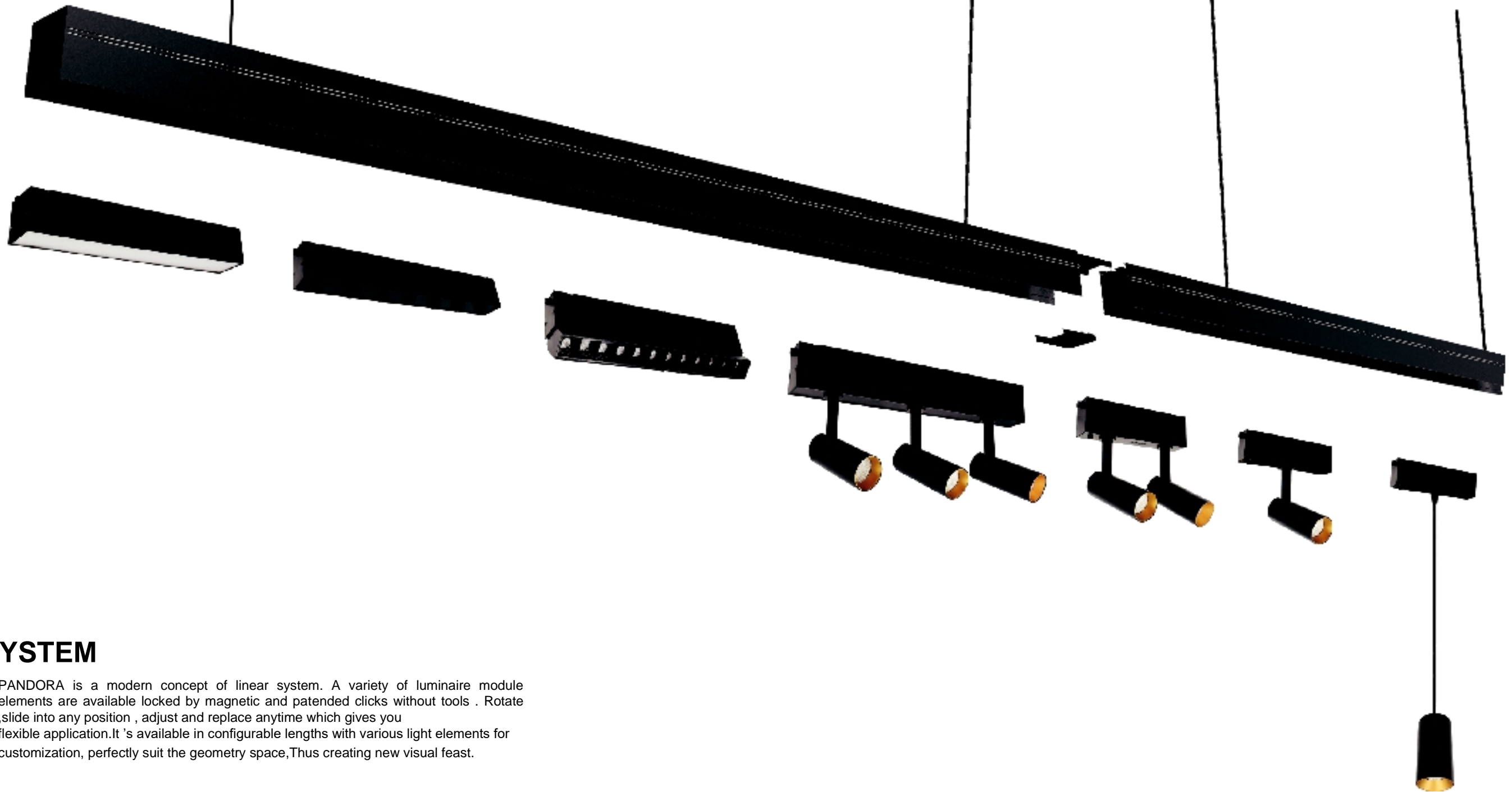


INDOOR PRODUCT

MAGNETIC LIGHT SERIES



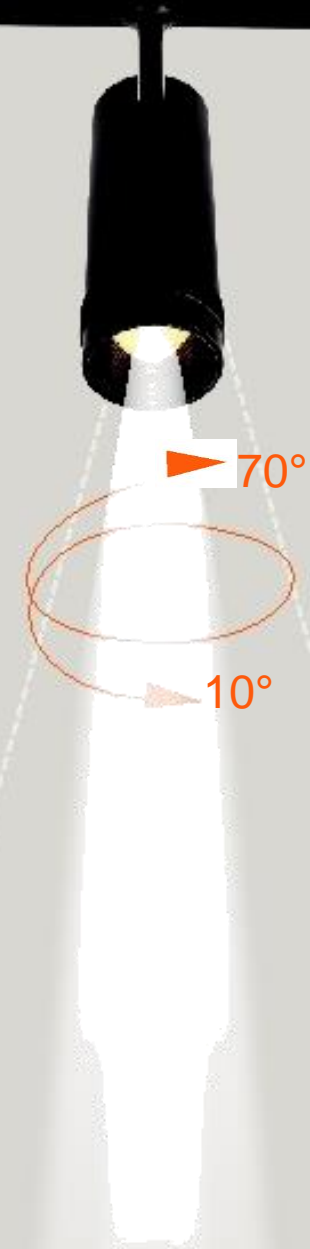
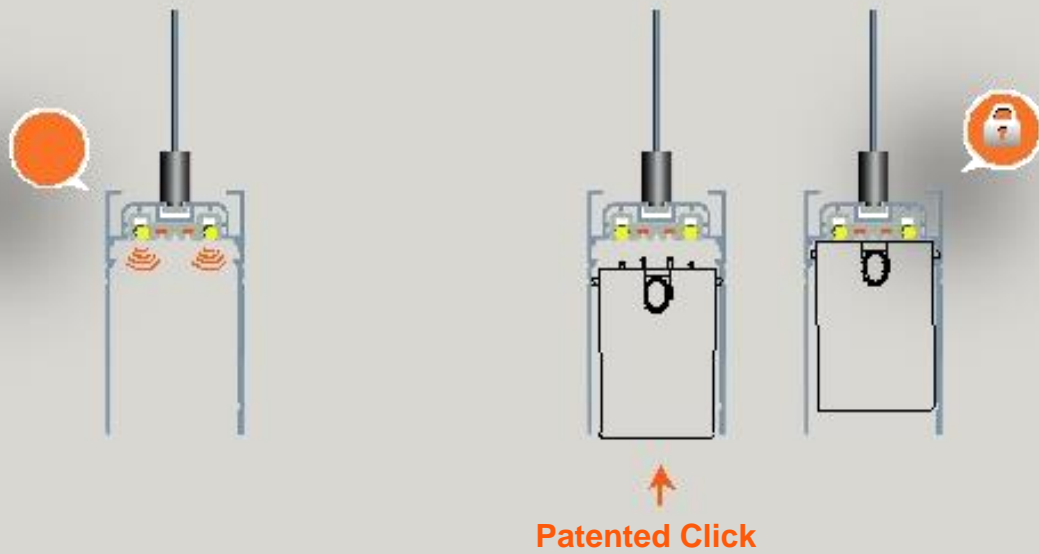
SYSTEM

PANDORA is a modern concept of linear system. A variety of luminaire module elements are available locked by magnetic and patented clicks without tools. Rotate, slide into any position, adjust and replace anytime which gives you flexible application. It's available in configurable lengths with various light elements for customization, perfectly suit the geometry space, Thus creating new visual feast.



PANDORA SYSTEM

Secure magnetic locking installation:
 Different components are held by magnetic force and patented clicks along the entire track. New locking technology can be operated with all component. No need tools for installation. Rotate ,slide into any position , 48V for the whole system can be safety released and adjusted by securely clicks.



Use a focus convex lens system with a thread movement, beam angle available from 10° to 70°, 350 °rotatable 90°tiltable , which gives you the flexible application.

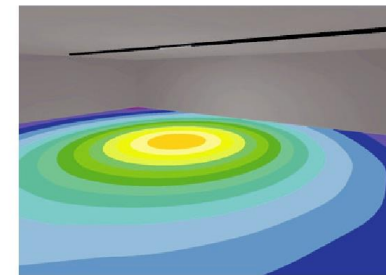
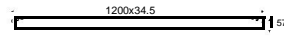
WN06446

Max 36W LED

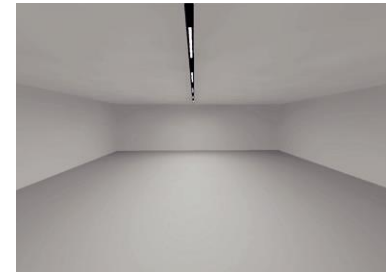


Color:

Light source	SMD LED 32W
Beam angle	100°
Color temperature	3000K/4000K/6000K
Light output	3000LM/3200LM/3400LM
Color rendering index	Ra ≥ 80
Operating temperature	-20°C~ +40°C
Rated life hours	30,000~ 50,000H
LED driver (Built-in)	NON-DIM,DALI
Input	48V/DC
LED-current	900mA
Power consumption	Max 36W

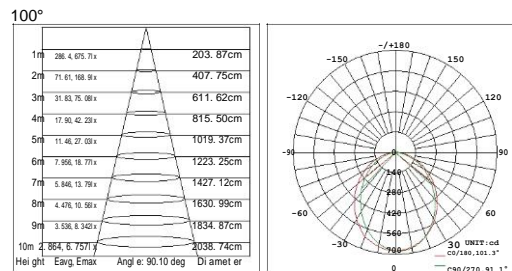


0.00 0.71 0.88 1.4 1.9 2.6 3.6 5 6.5 8.3 11 14 18 23 30 39 50 65 lx



LIGHTING SIMULATION

Power consumption	36W
Ground distance	3m
Brightness	3.98cd/m²
Illuminance(lx)	62.5lx



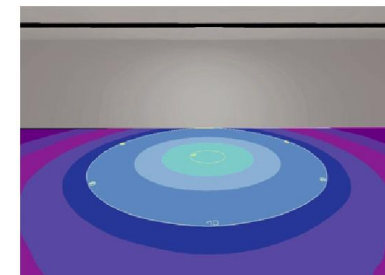
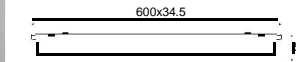
WN06445

Max 18W LED



Color:

Light source	SMD LED 16.8W
Beam angle	100°
Color temperature	3000K/4000K/6000K
Light output	1580LM/1670LM/1800LM
Color rendering index	Ra ≥ 80
Operating temperature	-20°C~ +40°C
Rated life hours	30,000~ 50,000H
LED driver (Built-in)	NON-DIM,DALI
Input	48V/DC
LED-current	600mA
Power consumption	Max 18W

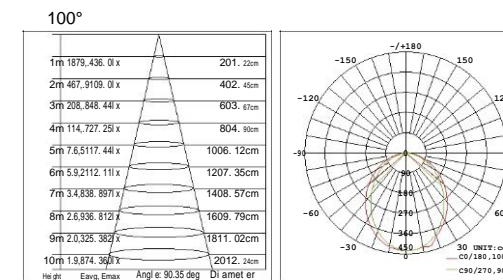


0.00 0.10 0.20 0.30 0.50 0.75 1.0 2.0 3.0 5.0 7.5 10 20 30 50 75 100 lx



LIGHTING SIMULATION

Power consumption	18W
Ground distance	3m
Brightness	2.12cd/m²
Illuminance(lx)	42.4lx

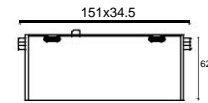


WN06471

Max 15W LED



- Color:
- Light source: SMD LED 12.8W
- Color temperature: 3000K/4000K/5000K
- Light output: 874LM/1024LM/1174LM
- Color rendering index: Ra ≥ 80
- Operating temperature: -20°C~+40°C
- Rated life hours: 30,000- 50,000H
- LED driver (Built-in): NON-DIM,DALI
- Input: 48V/DC
- LED-current: 350mA
- Power consumption: Max 15W



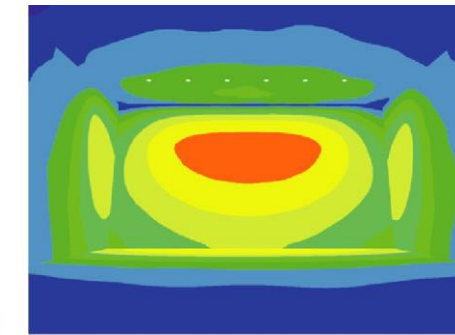
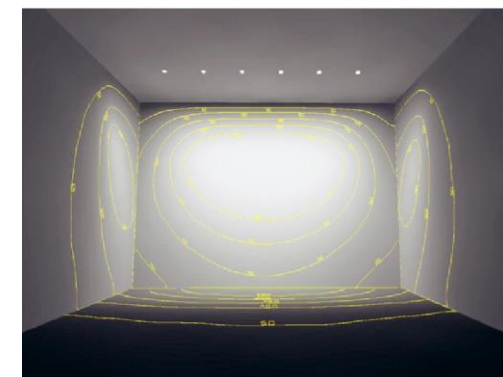
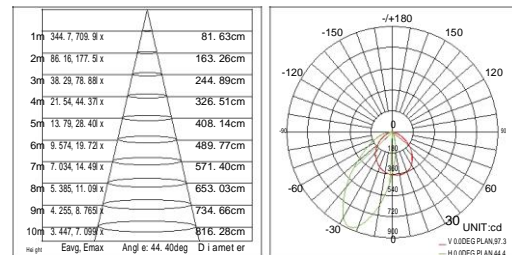
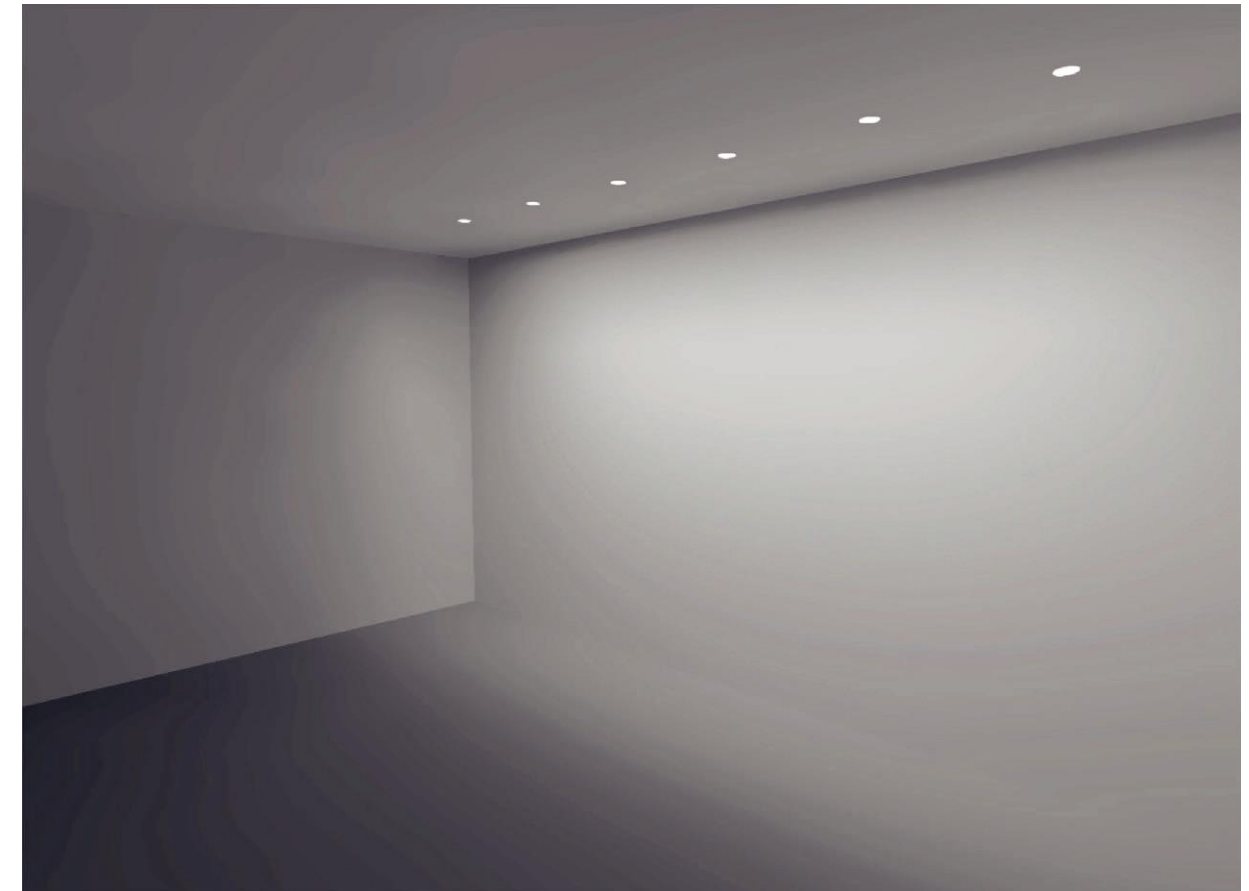
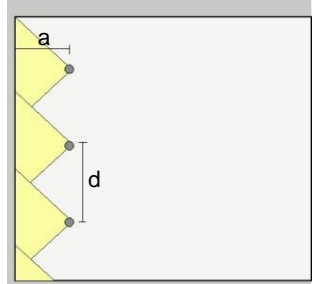
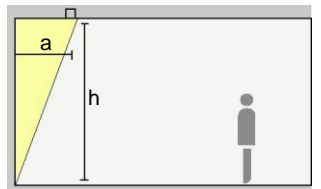
Wallwashers

For uniform vertical illuminance, the distance (a) of luminaire from the wall should be around one third of the room height (h).

Rough guide: $a = 1/3 \times h$

For optimal uniformity, the luminaire spacing (d) may be up to 0.7 times the distance (a) of luminaire from the wall.

Rough guide: $d \leq 0.7 \times a$



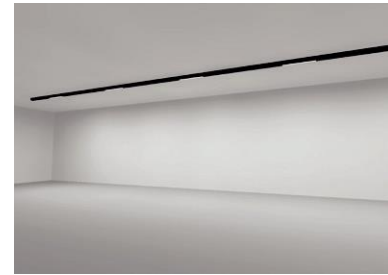
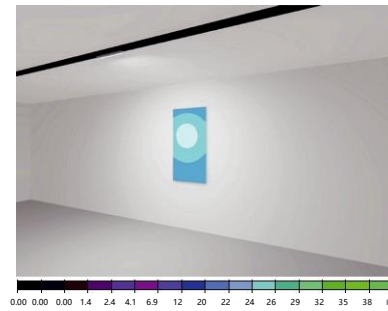
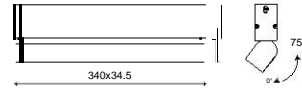
LIGHTING SIMULATION
 Distance from the wall: 1m
 Ground distance: 3m
 Brightness: 31cd/m²
 Maintenance factor: 0.8m
 408lx

WN06456

Max 24W LED



- Color:
- Light source: SMD LED 21W
- Beam angle: 100°
- Color temperature: 3000K/4000K/6000K
- Light output: 2236LM/2356LM/2476LM
- Color rendering index: Ra ≥ 80
- Operating temperature: -20°C~ +40°C
- Rated life hours: 30,000~ 50,000H
- LED driver (Built-in): NON-DIM,DALI
- Input: 48V/DC
- LED-current: 600mA
- Power consumption: Max 24W



LIGHTING SIMULATION
 Power consumption 24W
 Distance from the wall 2m
 Brightness 5.02cd/m²
 Illuminance(lx) 22.5lx

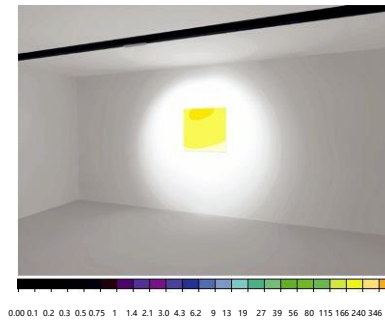


WN26429

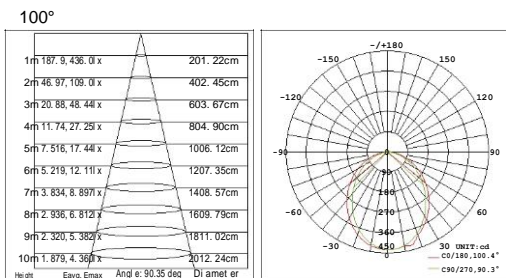
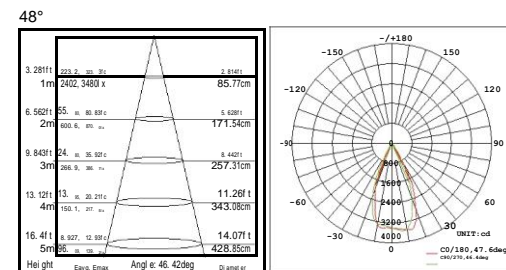
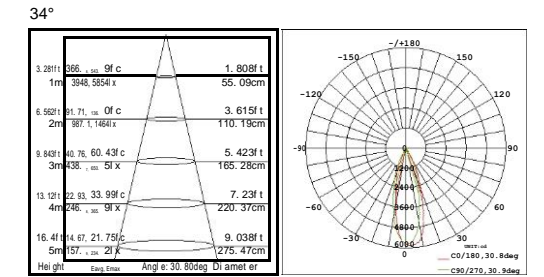
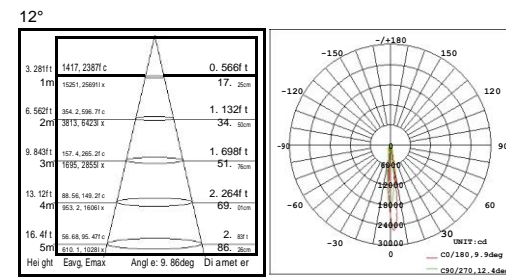
Max 24W LED



- Color:
- Light source: SMD LED 21W
- Beam angle: 12°/34°/48°
- Color temperature: 3000K/4000K/5000K
- Light output: 1953LM/2056LM/2163LM
- Color rendering index: Ra ≥ 80
- Operating temperature: -20°C~ +40°C
- Rated life hours: 30,000~ 50,000H
- LED driver (Built-in): NON-DIM,DALI
- Input: 48V/DC
- LED-current: 600mA
- Power consumption: Max 24W



LIGHTING SIMULATION
 Power consumption 24W
 Distance from the wall 3m
 Brightness 59.2cd/m²
 Illuminance(lx) 266lx

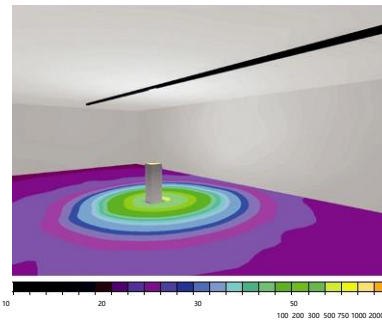
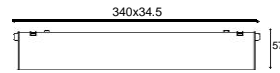


WN26428

Max 24W LED



- Color:
- Light source: SMD LED 21W
 - Beam angle: 12°/34°/48°
 - Color temperature: 3000K/4000K/5000K
 - Light output: 1953LM/2056LM/2163LM
 - Color rendering index: Ra ≥ 80
 - Operating temperature: -20°C- +40°C
 - Rated life hours: 30,000- 50,000H
 - LED driver (Built-in): NON-DIM,DALI
 - Input: 48V/DC
 - LED-current: 600mA
 - Power consumption: Max 24W



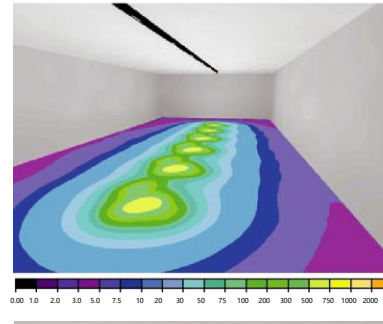
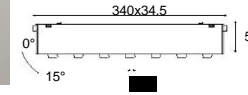
LIGHTING SIMULATION
 Power consumption: 24W
 Ground distance: 2m
 Brightness: 276cd/m²
 Illuminance(lx): 1237lx

WN16470

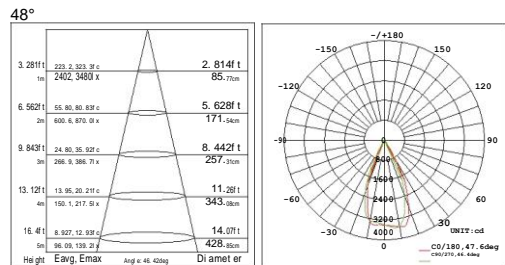
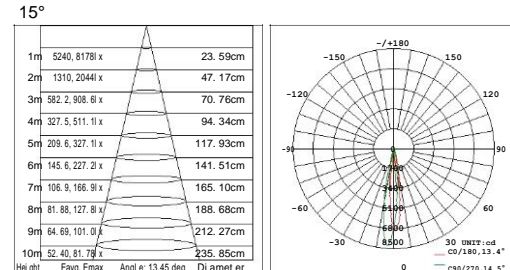
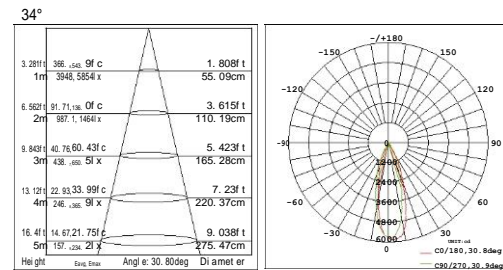
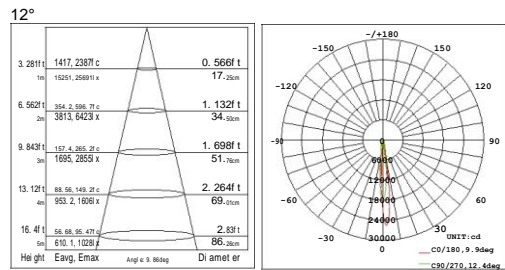
Max 14W LED



- Color:
- Light source: SMD LED 12W
 - Beam angle: 12°/25°
 - Color temperature: 3000K/4000K/5000K
 - Light output: 1222LM/1286LM/1354LM
 - Color rendering index: Ra ≥ 80
 - Operating temperature: -20°C- +40°C
 - Rated life hours: 30,000- 50,000H
 - LED driver (Built-in): NON-DIM,DALI
 - Input: 48V/DC
 - LED-current: 350mA
 - Power consumption: Max 14W



LIGHTING SIMULATION
 Power consumption: 14W
 Distance from the wall: 3m
 Brightness: 47.3cd/m²
 Illuminance(lx): 742lx



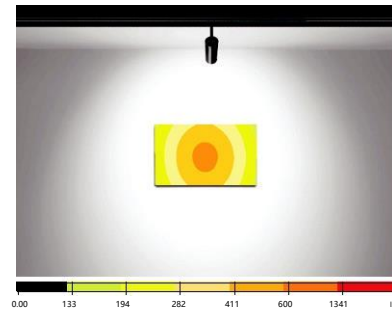
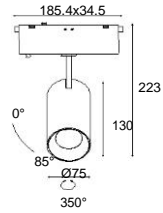
WN16496

Max 30W LED

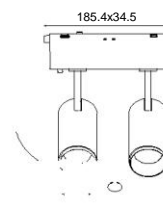


Color:

Light source	COB LED 28W
Beam angle	15°/24°/36°/60°
Color temperature	3000K/4000K/5000K
Light output	2068LM/2218LM/2368LM
Color rendering index	Ra ≥ 80
Operating temperature	-20°C~ +40°C
Rated life hours	30,000~ 50,000H
LED driver (Built-in)	NON-DIM,DALI
Input	48V/DC
LED-current	700mA
Power consumption	Max 30W



LIGHTING SIMULATION
 Power consumption 30W
 Distance from the wall 2.5m
 Brightness 89.8cd/m²
 Illuminance(lx) 664lx



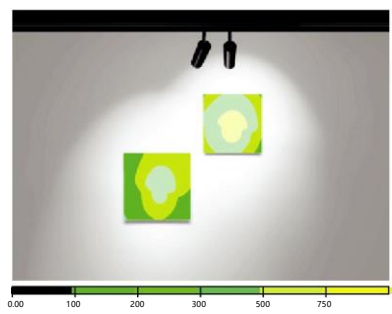
WN16466

Max 24W LED

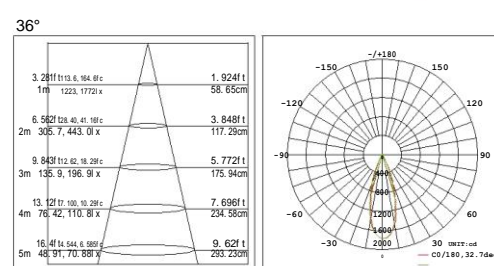
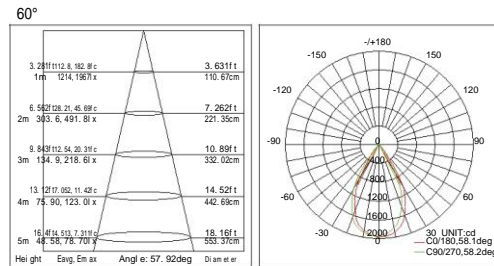
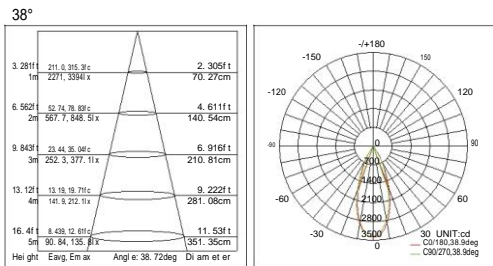
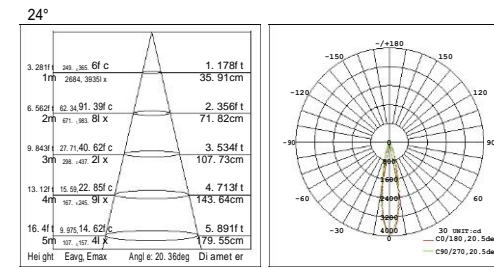
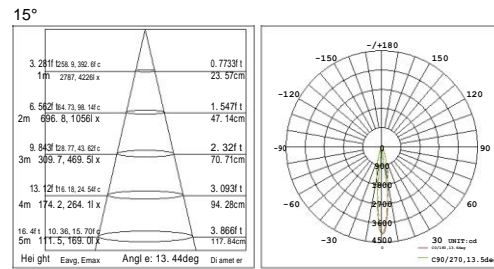
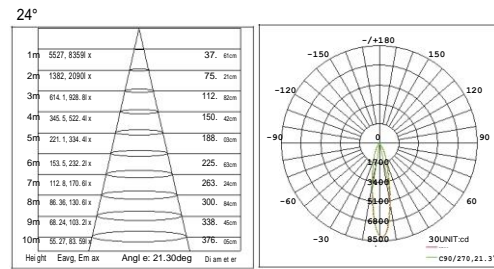
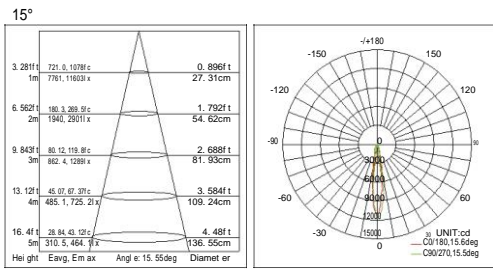


Color:

Light source	COB LED 2x10.8W
Beam angle	15°/24°/36°
Color temperature	3000K/4000K/5000K
Light output	1953LM/2056LM/2163LM
Color rendering index	Ra ≥ 80
Operating temperature	-20°C~ +40°C
Rated life hours	30,000~ 50,000H
LED driver (Built-in)	NON-DIM,DALI
Input	48V/DC

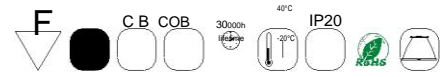


LIGHTING SIMULATION
 Power consumption 24W
 Distance from the wall 2m
 Brightness 85.7cd/m²
 Illuminance(lx) 701lx

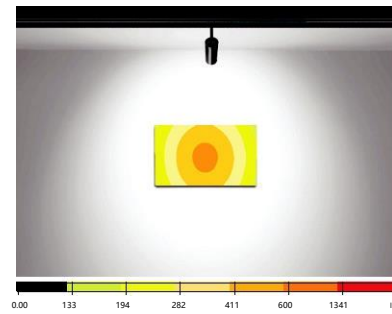
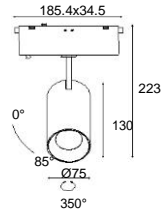


WN16496

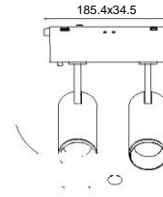
Max 30W LED



Color: LiWNGt source
 Beam angle: 15°/24°/36°/60°
 Color temperature: 3000K/4000K/5000K
 LiWNGt output: 2068LM/2218LM/2368LM
 Color rendering index: Ra ≥ 80
 Operating temperature: -20°C~ +40°C
 Rated life hours: 30,000~ 50,000H
 LED driver (Built-in): NON-DIM,DALI
 Input: 48V/DC
 LED-current: 700mA
 Power consumption: Max 30W

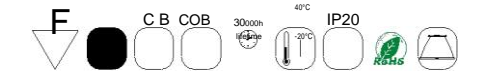


LIWNGTING SIMULATION
 Power consumption 30W
 Distance from the wall 2.5m
 BriWNGtne ss 89.8cd/m²
 Illuminance(lx) 664lx

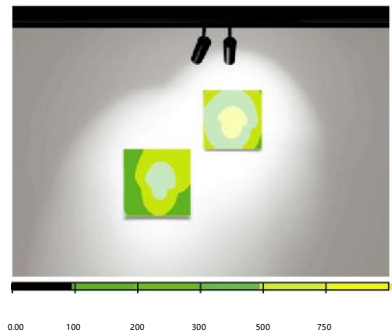


WN16466

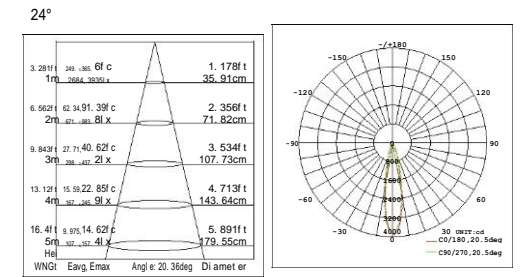
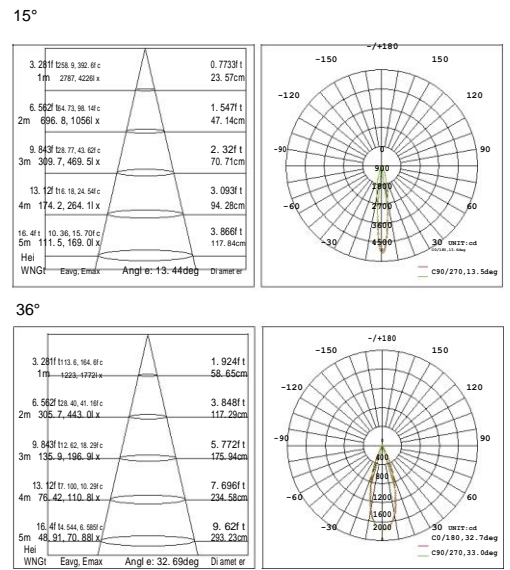
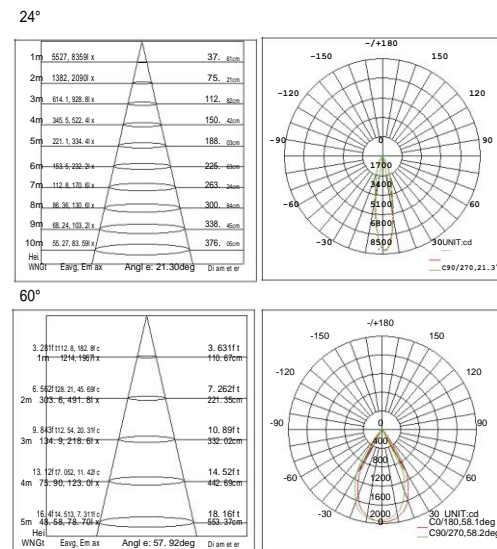
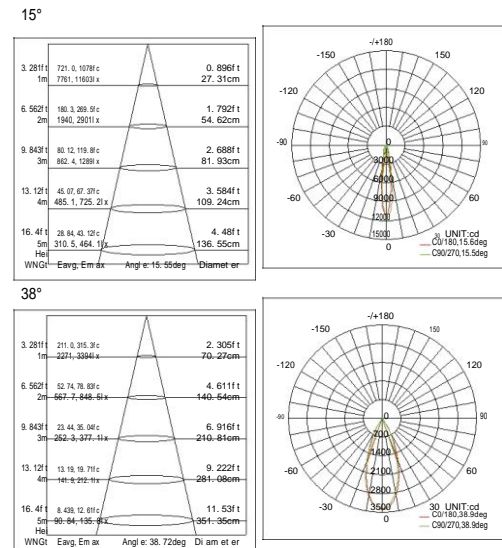
Max 24W LED



Color: LiWNGt source
 Beam angle: 15°/24°/36°
 Color temperature: 3000K/4000K/5000K
 LiWNGt output: 1953LM/2056LM/2163LM
 Color rendering index: Ra ≥ 80
 Operating temperature: -20°C~ +40°C
 Rated life hours: 30,000~ 50,000H
 LED driver (Built-in): NON-DIM,DALI
 Input: 48V/DC



LIWNGTING SIMULATION
 Power consumption 24W
 Distance from the wall 2m
 BriWNGtne ss 85.7cd/m²
 Illuminance(lx) 701lx

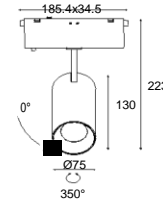




WN16463
Max 20W LED



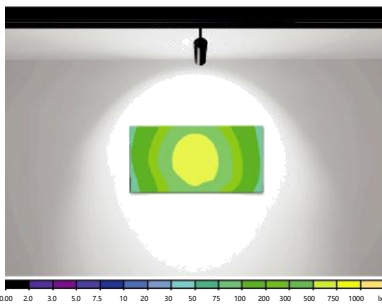
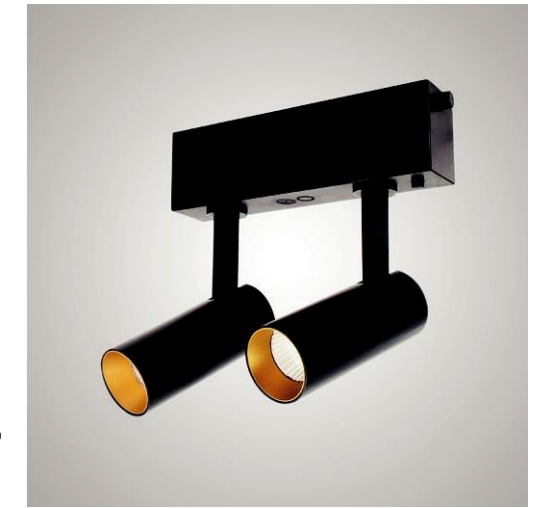
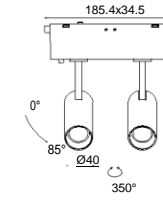
Color:	<input type="checkbox"/> <input type="checkbox"/>
LiWNGt source	COB LED 18W
Beam angle	15°/24°/38°/60°
Color temperature	3000K/4000K/5000K
LiWNGt output	1637LM/1723LM/1814LM
Color rendering index	Ra ≥ 80
Operating temperature	-20°C~ +40°C
Rated life hours	30,000~ 50,000H
LED driver (Built-in)	NON-DIM,DALI
Input	48V/DC
LED-current	500mA
Power consumption	Max 20W



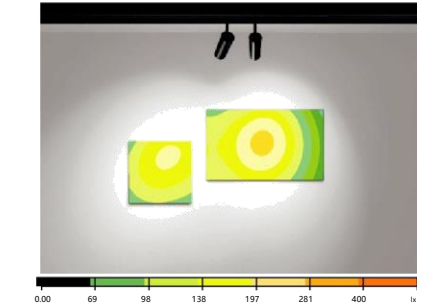
WN16467
Max 14W LED



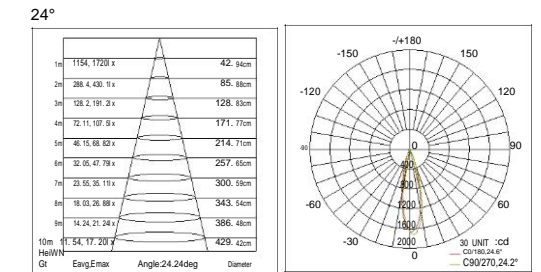
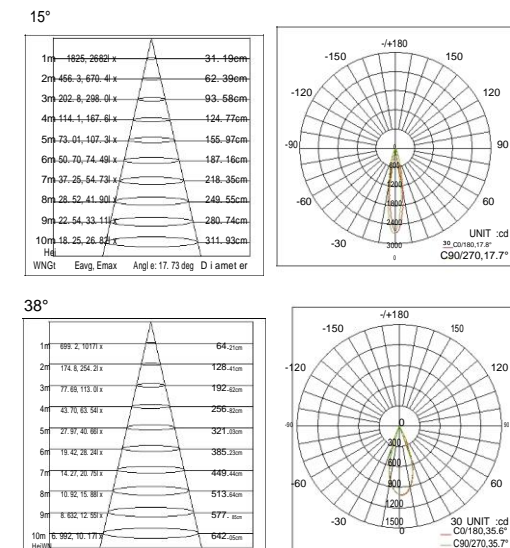
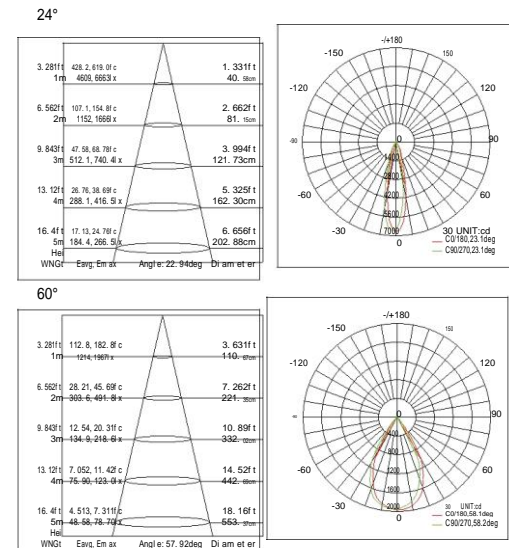
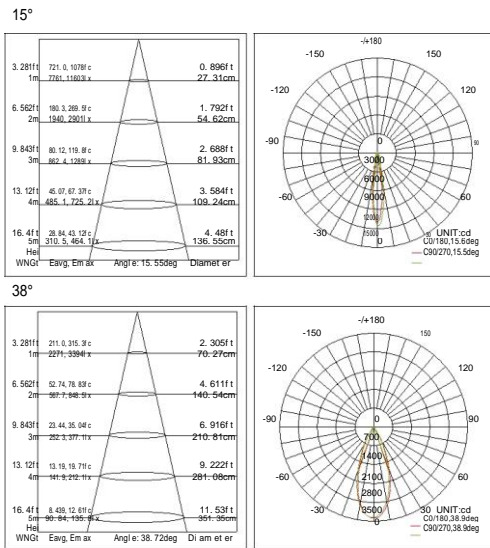
Color:	<input type="checkbox"/> <input type="checkbox"/>
LiWNGt source	COB LED 2x6W
Beam angle	15°/24°/38°
Color temperature	3000K/4000K/5000K
LiWNGt output	1222LM/1286LM/1354LM
Color rendering index	Ra ≥ 80
Operating temperature	-20°C~ +40°C
Rated life hours	30,000~ 50,000H
LED driver (Built-in)	NON-DIM,DALI
Input	48V/DC
LED-current	500mA
Power consumption	Max 14W



LIWNGTING SIMULATION
Power consumption 20W
Distance from the wall 2.5m
BriWNGtness 71.8cd/m²
Illuminance(lx) 676lx



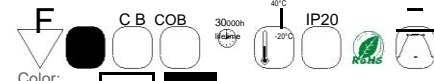
LIWNGTING SIMULATION
Power consumption 14W
Distance from the wall 2m
BriWNGtness 71.3cd/m²
Illuminance(lx) 320lx





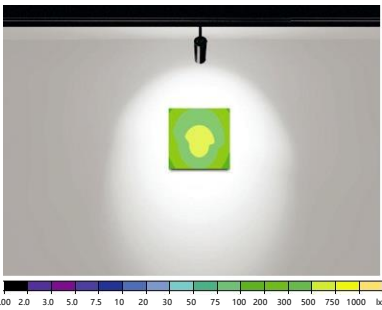
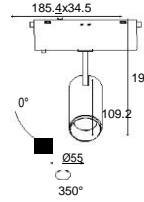
WN16464

Max 12W LED



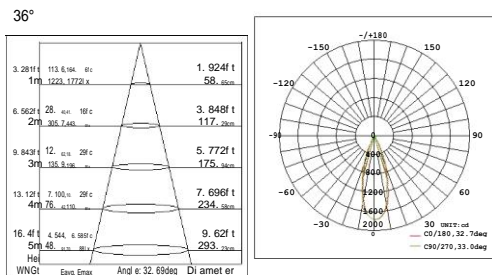
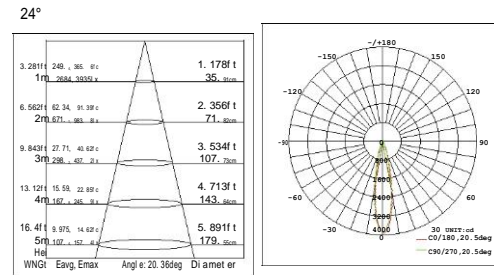
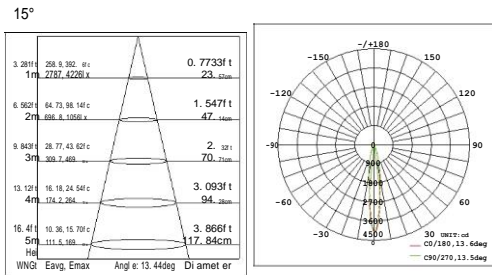
Color:

LiWNGt source	COB LED 10W
Beam angle	15°/24°/36°
Color temperature	3000K/4000K/5000K
LiWNGt output	900LM/960LM/1020LM
Color rendering index	Ra ≥ 80
Operating temperature	-20°C~ +40°C
Rated life hours	30,000~ 50,000H
LED driver (Built-in)	NON-DIM,DALI
Input	48V/DC
LED-current	300mA
Power consumption	Max 12W



LIWNGTING SIMULATION

Power consumption	12W
Distance from the wall	2m
BriWNGtness	81.6cd/m²
Illuminance(lx)	692lx



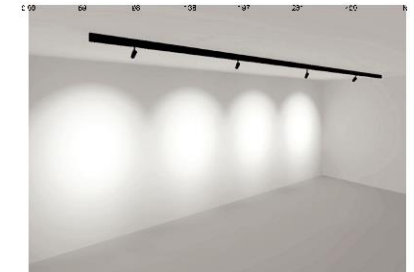
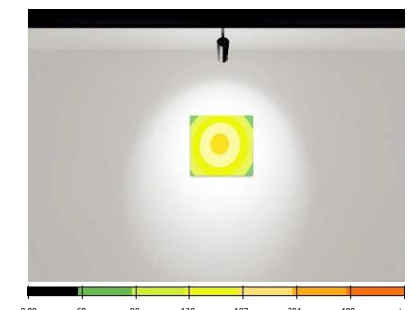
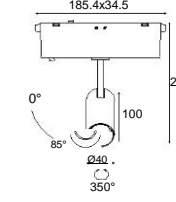
WN16465

Max 7W LED



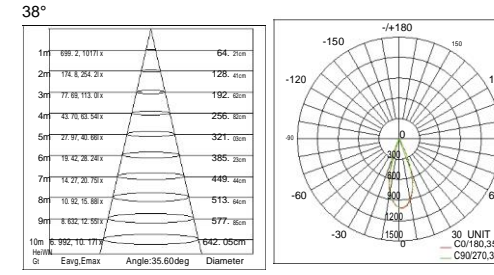
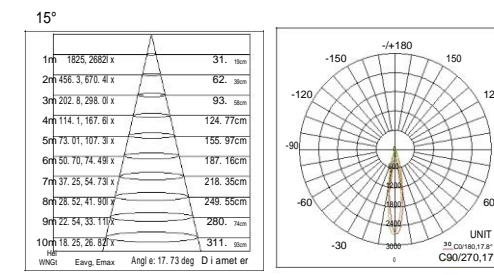
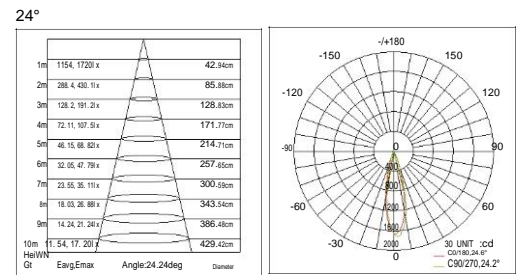
Color:

LiWNGt source	COB LED 5.7W
Beam angle	15°/24°/38°
Color temperature	3000K/4000K/5000K
LiWNGt output	490LM/525LM/560LM
Color rendering index	Ra ≥ 80
Operating temperature	-20°C~ +40°C
Rated life hours	30,000~ 50,000H
LED driver (Built-in)	NON-DIM,DALI
Input	48V/DC
LED-current	300mA
Power consumption	Max 7W



LIWNGTING SIMULATION

Power consumption	7W
Distance from the wall	2m
BriWNGtness	70.6cd/m²
Illuminance(lx)	317lx





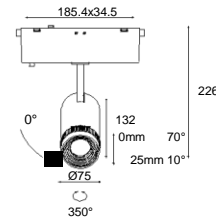
WN16482

Max 20W LED



Color:

LiWNGt source COB LED 18.2W
 Beam angle 10° ~ 70°
 Color temperature 3000K/4000K/5000K
 LiWNGt output 1803LM/1790LM/1895LM
 Color rendering index Ra ≥ 80
 Operating temperature -20°C~ +40°C
 Rated life hours 30,000~ 50,000H
 LED driver (Built-in) NON-DIM,DALI
 Input 48V/DC
 LED-current 500mA
 Power consumption Max 20W



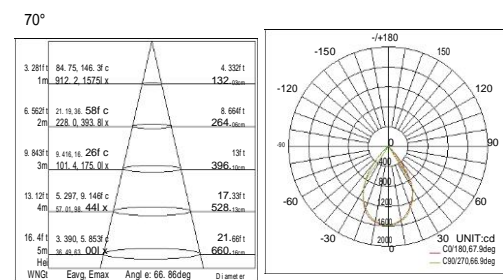
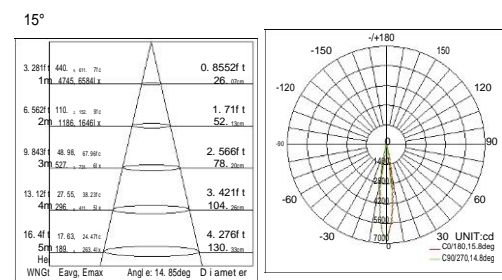
10°



70°

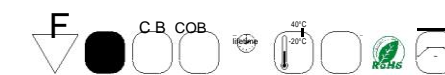
LIWNGTING SIMULATION (10°)
 Power consumption 21W
 Distance from the wall 2m
 BriWNGtness 210cd/m²
 Illuminance(lx) 941lx

LIWNGTING SIMULATION (70°)
 Power consumption 21W
 Distance from the wall 2m
 BriWNGtness 56.8cd/m²
 Illuminance(lx) 255lx



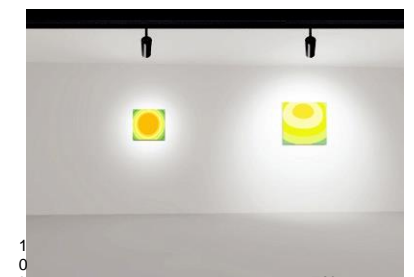
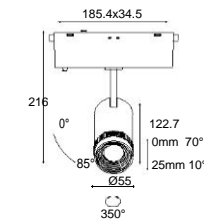
WN16469

Max 12W LED



Color:

LiWNGt source COB LED 10W
 Beam angle 10° ~ 70°
 Color temperature 3000K/4000K/5000K
 LiWNGt output 900LM/960LM/1020LM
 Color rendering index Ra ≥ 80
 Operating temperature -20°C~ +40°C
 Rated life hours 30,000~ 50,000H
 LED driver (Built-in) NON-DIM,DALI
 Input 48V/DC
 LED-current 300mA
 Power consumption Max 12W



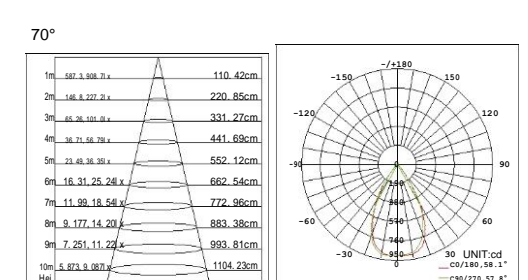
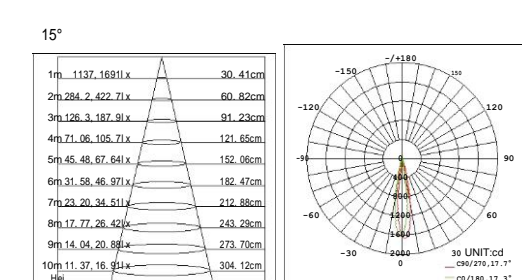
10°



70°

LIWNGTING SIMULATION (10°)
 Power consumption 12W
 Distance from the wall 2m
 BriWNGtness 66cd/m²
 Illuminance(lx) 296lx

LIWNGTING SIMULATION (70°)
 Power consumption 12W
 Distance from the wall 2m
 BriWNGtness 40.7cd/m²
 Illuminance(lx) 183lx

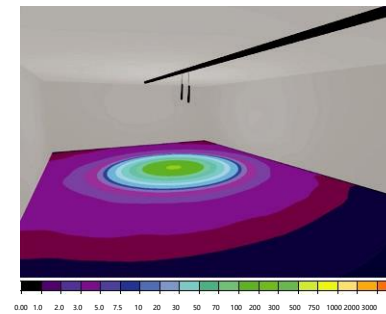
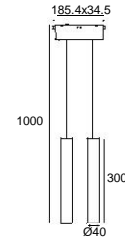


WN16488

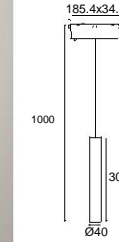
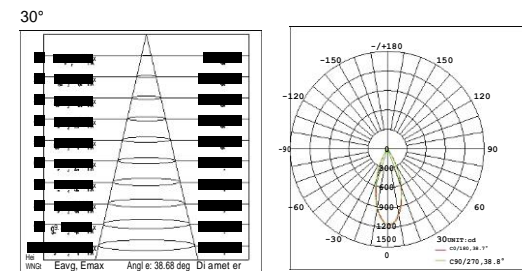
Max 24W LED



Color:
 LiWNGt source COB LED 21W
 Beam angle 20°/30°/36°/60°
 Color temperature 3000K/4000K/5000K
 LiWNGt output 1180LM/1380LM/1600LM
 Color rendering index Ra ≥ 80
 Operating temperature -20°C~ +40°C
 Rated life hours 30,000~ 50,000H
 LED driver (Built-in) NON-DIM,DALI
 Input 48V/DC
 LED-current 600mA
 Power consumption Max 24W



LIWNGTING SIMULATION
 Power consumption 20W
 Distance from the ground 2.5m
 BriWNGtness 13.4cd/m²
 Illuminance(lx) 211lx

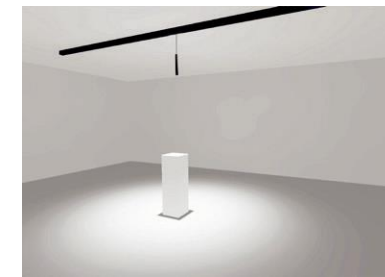
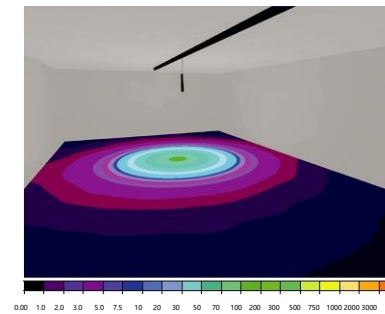


WN16487

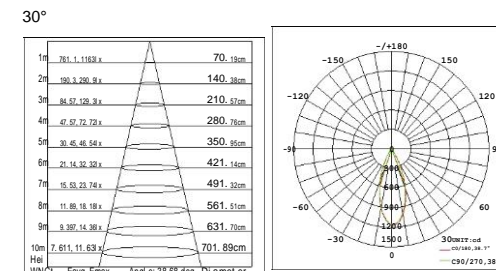
Max 12W LED



Color:
 LiWNGt source COB LED 10W
 Beam angle 20°/30°/36°/60°
 Color temperature 3000K/4000K/5000K
 LiWNGt output 540LM/650LM/780LM
 Color rendering index Ra ≥ 80
 Operating temperature -20°C~ +40°C
 Rated life hours 30,000~ 50,000H
 LED driver (Built-in) NON-DIM,DALI
 Input 48V/DC
 LED-current 300mA
 Power consumption Max 12W



LIWNGTING SIMULATION
 Power consumption 12W
 Distance from the ground 2m
 BriWNGtness 6.79cd/m²
 Illuminance(lx) 107lx



PANDOORA

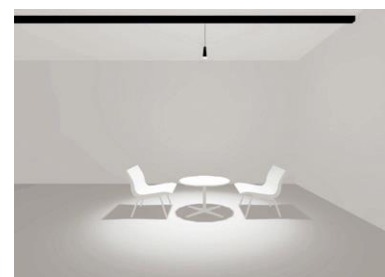
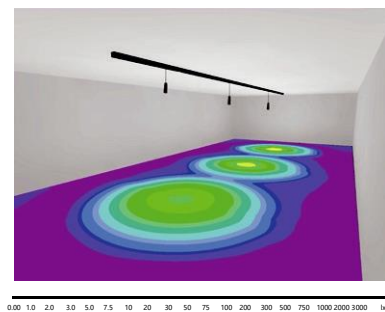
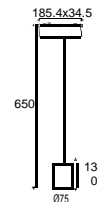
WN06433

Max 20W LED

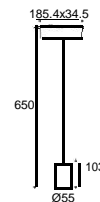
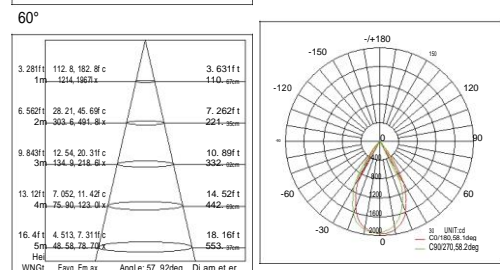
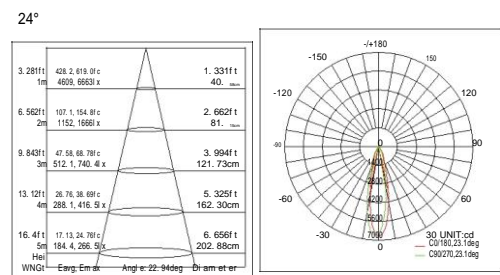
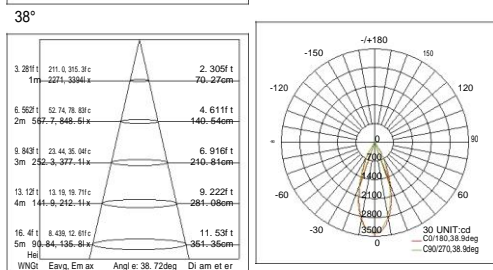
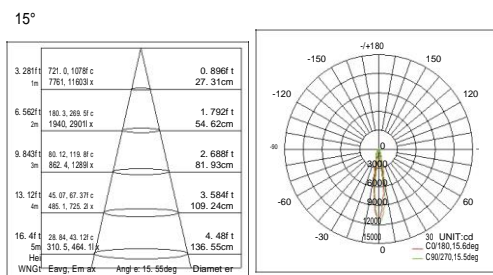


Color:

LiWNGT source	COB LED 18W
Beam angle	15°/24°/38°/60°
Color temperature	3000K/4000K/5000K
LiWNGT output	1637LM/1723LM/1814LM
Color rendering index	Ra ≥ 80
Operating temperature	-20°C~ +40°C
Rated life hours	30,000~ 50,000H
LED driver (Built-in)	NON-DIM,DALI
Input	48V/DC
LED-current	500mA
Power consumption	Max 20W



LIWNGTING SIMULATION
 Power consumption 20W
 Distance from the ground 2.5m
 BriWNGtness 69.5cd/m²
 Illuminance(lx) 1092lx



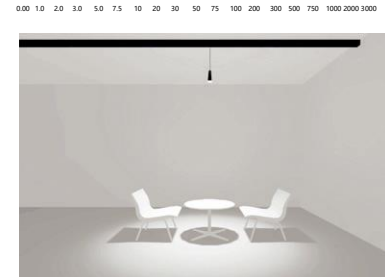
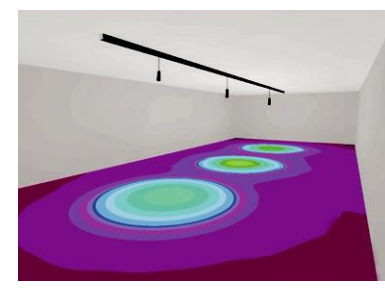
WN06434

Max 12W LED

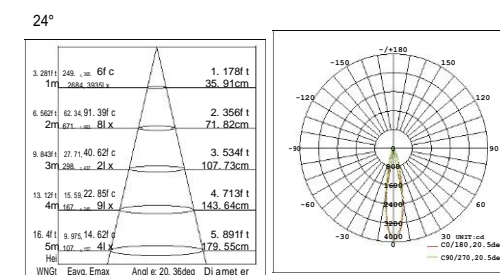
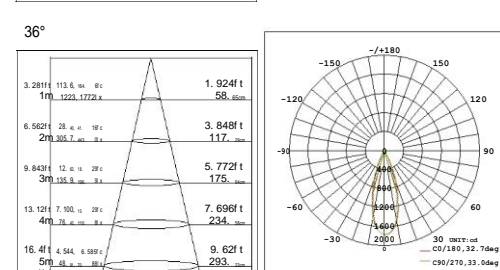
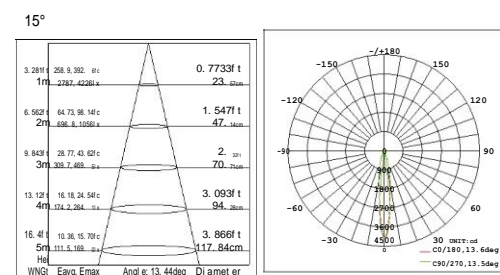


Color:

LiWNGT source	COB LED 10W
Beam angle	15°/24°/36°
Color temperature	3000K/4000K/5000K
LiWNGT output	900LM/960LM/1020LM
Color rendering index	Ra ≥ 80
Operating temperature	-20°C~ +40°C
Rated life hours	30,000~ 50,000H
LED driver (Built-in)	NON-DIM,DALI
Input	48V/DC
LED-current	300mA
Power consumption	Max 12W



LIWNGTING SIMULATION
 Power consumption 12W
 Distance from the ground 2m
 BriWNGtness 23.1cd/m²
 Illuminance(lx) 362lx



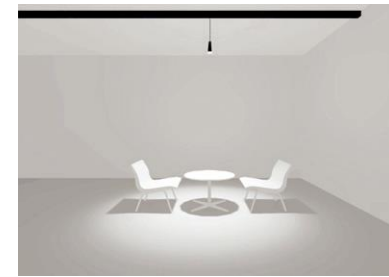
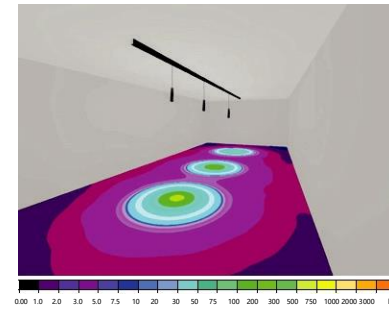
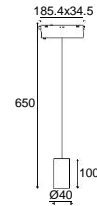
WN06435

Max 7W LED

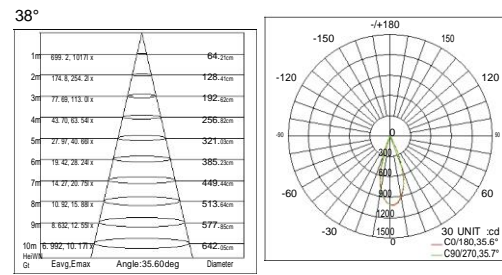
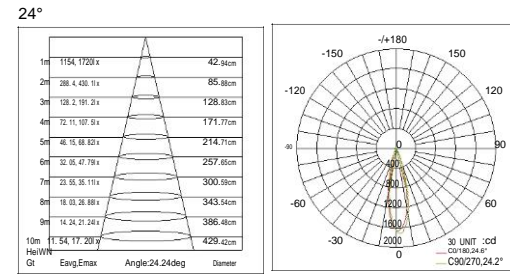
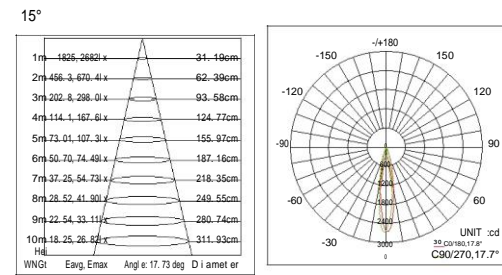


Color:

LiWNGt source COB LED 5W
 Beam angle 15°/24°/38°
 Color temperature 3000K/4000K/5000K
 LiWNGt output 490LM/525LM/560LM
 Color rendering index Ra ≥ 80
 Operating temperature -20°C~ +40°C
 Rated life hours 30,000~ 50,000H
 LED driver (Built-in) NON-DIM,DALI
 Input 48V/DC
 LED-current 600mA
 Power consumption Max 7W



LIWNGTING SIMULATION
 Power consumption 7W
 Distance from the ground 2.5m
 BriWNGtness 15.6cd/m²
 Illuminance(lx) 245lx

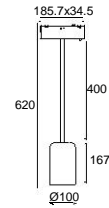


WNG0116

Max 7W LED



LiWNGt source	COB LED 8W
Beam angle	36°
Color temperature	2700K/3000K/4000K
LiWNGt output	400LM/445LM/480LM
Color rendering index	Ra ≥ 80
Operating temperature	-20°C~ +40°C
Rated life hours	30,000~ 50,000H
LED driver (Built-in)	NON-DIM,DALI
Input	48V/DC
LED-current	150mA
Power consumption	Max 7W

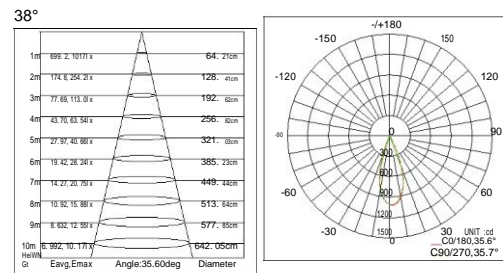
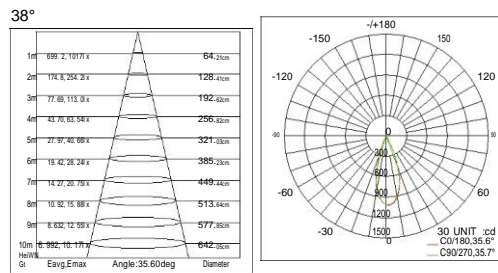
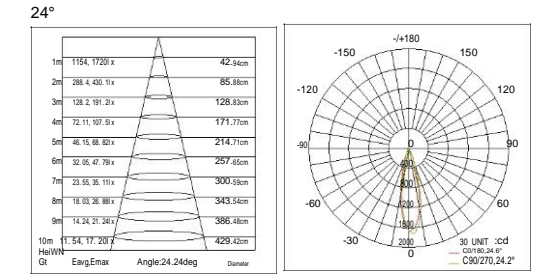
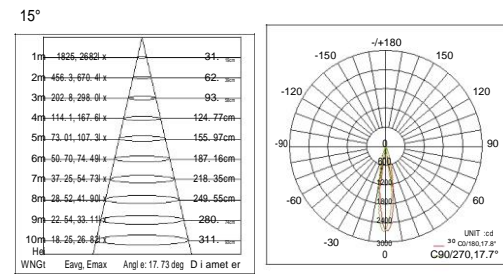
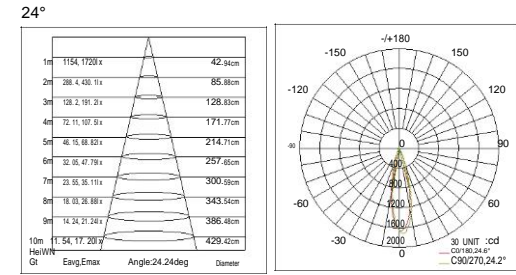
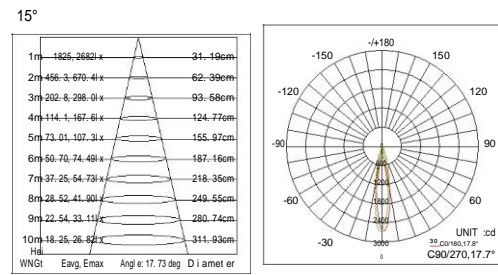
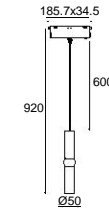


WNG0117

Max 7W LED



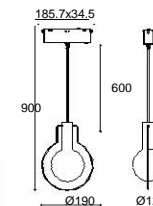
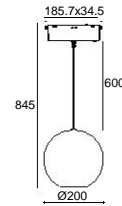
LiWNGt source	COB LED 8W
Beam angle	15°/24°/38°
Color temperature	2700K/3000K/4000K
LiWNGt output	470LM/490LM/525LM
Color rendering index	Ra ≥ 80
Operating temperature	-20°C~ +40°C
Rated life hours	30,000~ 50,000H
LED driver (Built-in)	NON-DIM,DALI
Input	48V/DC
LED-current	150mA
Power consumption	Max 7W



WNG0114

Max 7W LED

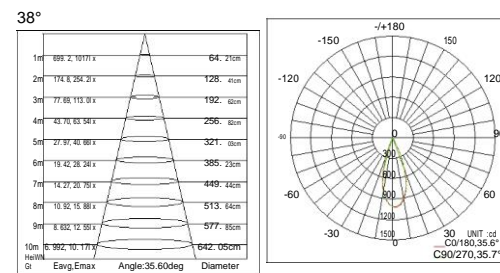
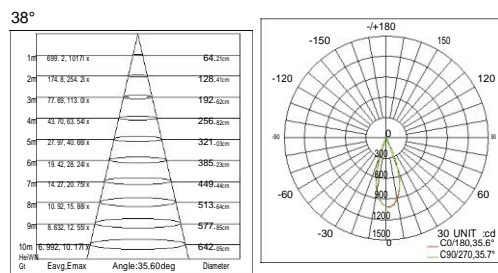
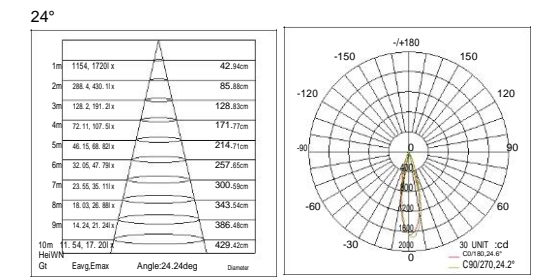
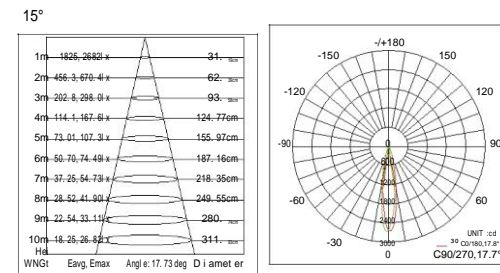
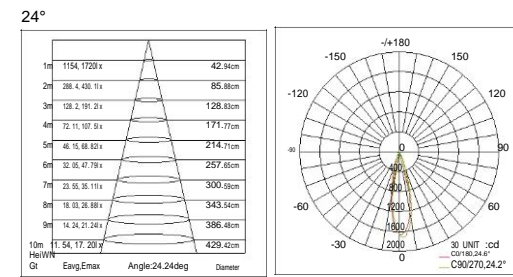
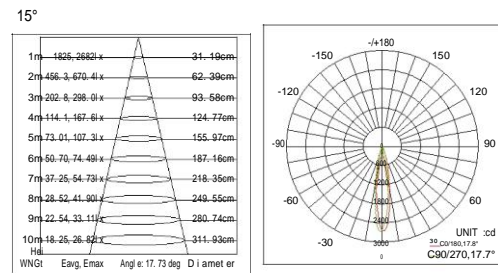
LiWNGt source	COB LED 8W
Beam angle	15°/24°/38°
Color temperature	3000K/4000K/5000K
LiWNGt output	490LM/515LM/542LM
Color rendering index	Ra ≥ 80
Operating temperature	-20°C~ +40°C
Rated life hours	30,000~ 50,000H
LED driver (Built-in)	NON-DIM,DALI
Input	48V/DC
LED-current	150mA
Power consumption	Max 7W



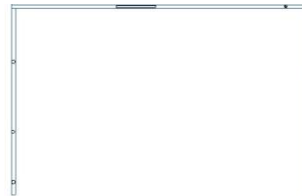
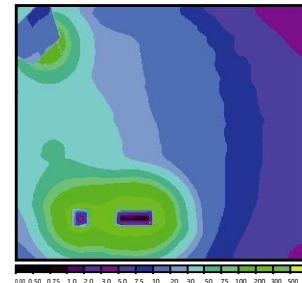
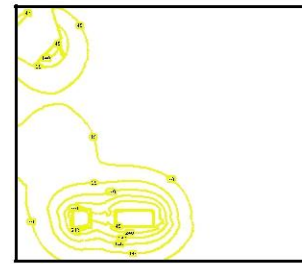
WNG0115

Max 7W LED

LiWNGt source	COB LED 8W
Beam angle	118°
Color temperature	2700K/3000K/4000K
LiWNGt output	380LM/420LM/470LM
Color rendering index	Ra ≥ 80
Operating temperature	-20°C~ +40°C
Rated life hours	30,000~ 50,000H
LED driver (Built-in)	NON-DIM,DALI
Input	48V/DC
LED-current	150mA
Power consumption	Max 7W

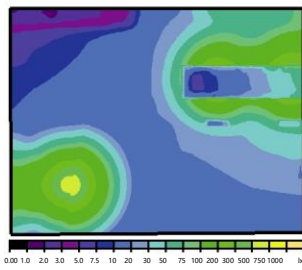
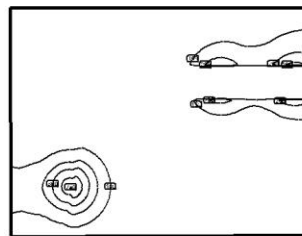






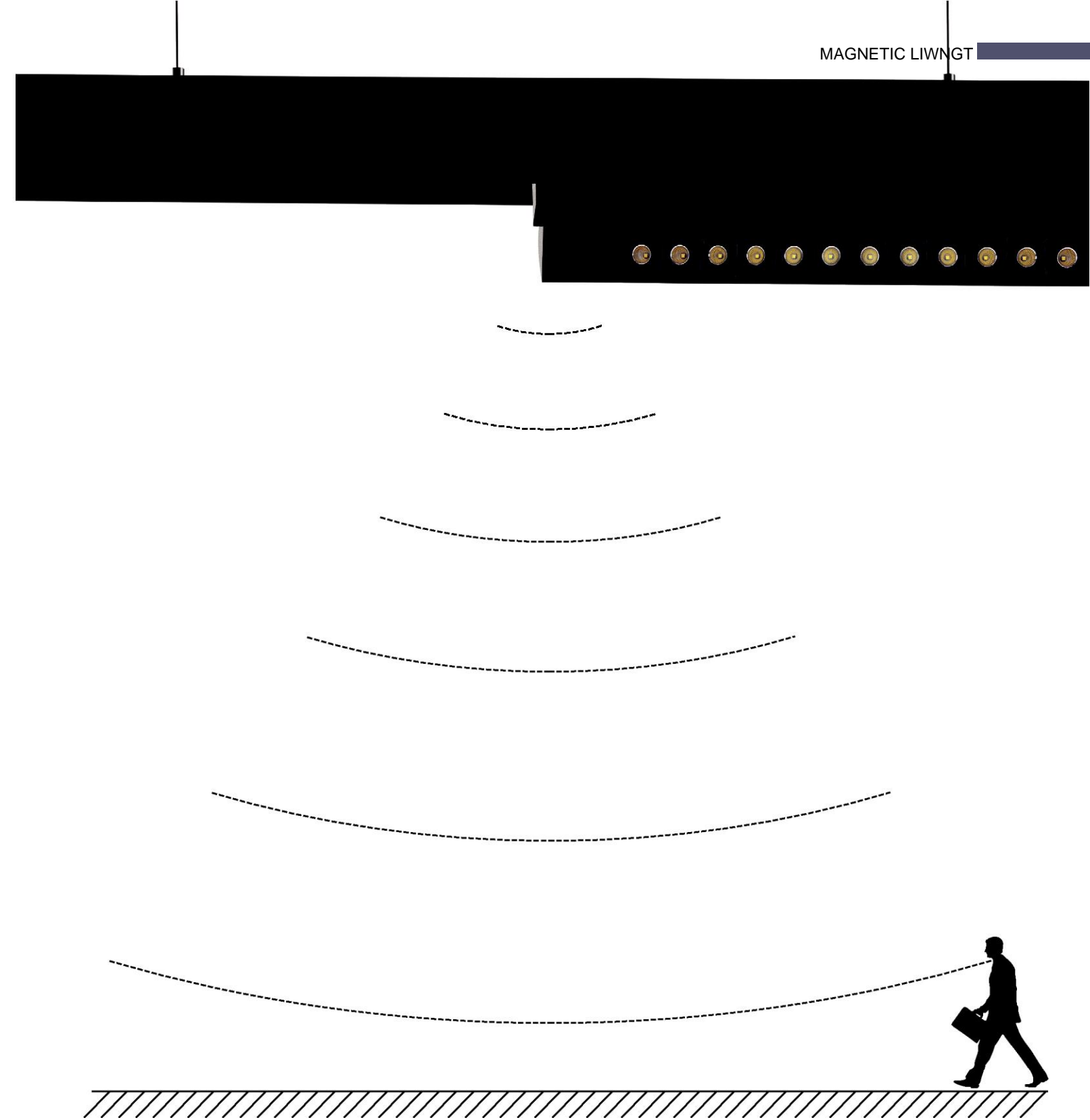
LIWNGTING SIMULATION

Room dimensions 8x7x3.5m
 Distance from the wall 1.3m
 Distance from the ground 3m
 Maintenance factor 0.8m






LIWNGTING SIMULATION

Room dimensions 7x5.5x3m
 Distance from the wall 1.3m
 Distance from the ground 2.95m
 Maintenance factor 0.8m

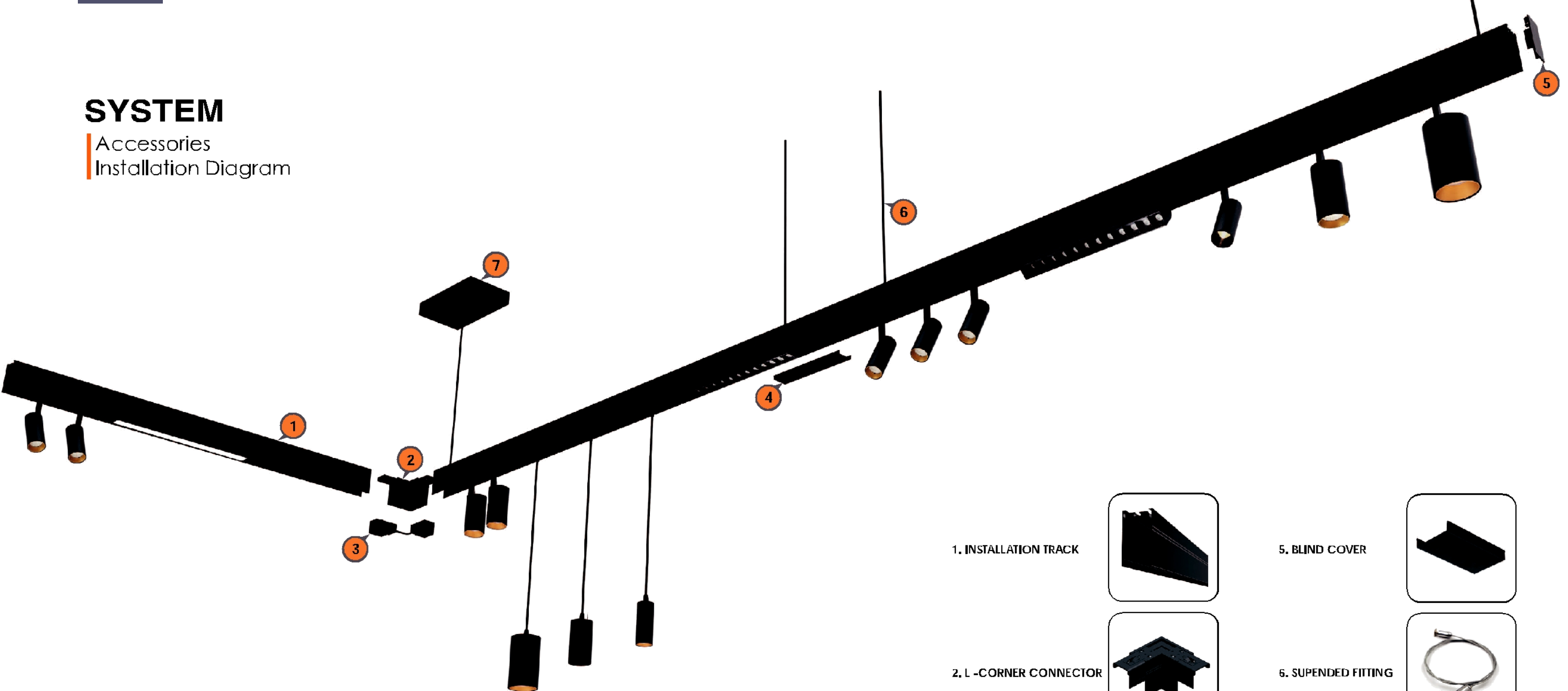


The PANDORA Linear liWNGts can be with radar sensor ,leading to energy-saving and hiWNGer comfort .These sensors can be programmed ,you can program the sensor to switch liWNGts on automatically when someone enters the room,and switch off automatically when leave the detection area.LiWNGt status can be programmed to match for your projects.

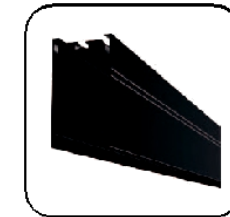
- 
 Max 5M
- 
 Hold Time
 HeiWNGt
 5S-30Min
- 
 Mounting
 3M Max

SYSTEM

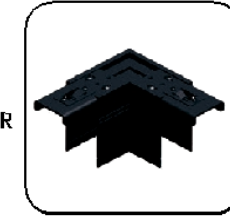
Accessories
Installation Diagram



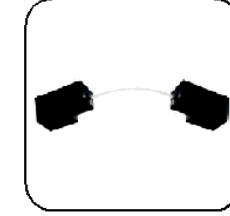
1. INSTALLATION TRACK



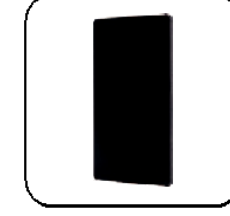
2. L-CORNER CONNECTOR



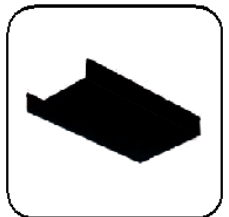
3. TRACK ADAPTER



4. END-CAP



5. BLIND COVER



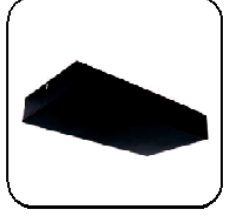
6. SUSPENDED FITTING



7. LED CONVERTER EXTERN

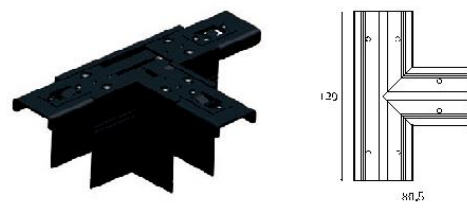


TRANSFORMER MOUNTING BOX



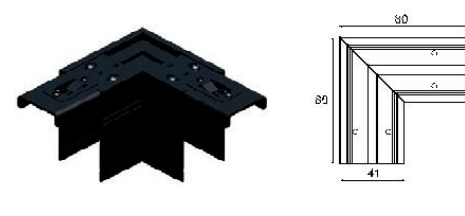
Fittings for surface/suspended mounted

1. Electric Accessories (NON-DIM/DALI DIM)



T-CORNER CONNECTOR

Dimension	COLOR
120x80.5mm	Black
	White



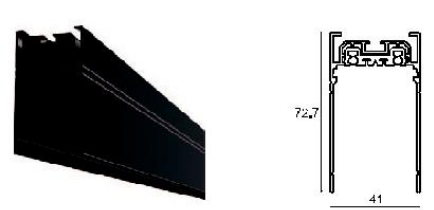
L-CORNER CONNECTOR

Dimension	COLOR
80x80x41mm	Black
	White



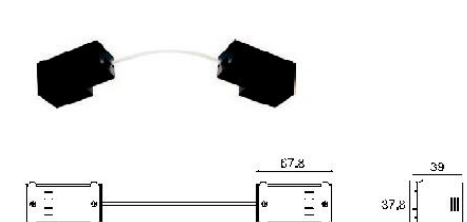
VERTICAL CORNER CONNECTOR

Dimension	COLOR
41x72.7mm	Black
	White



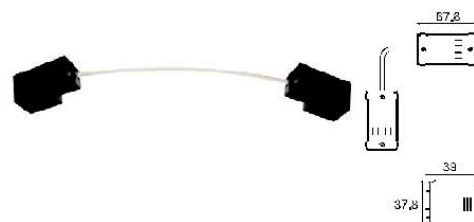
INSTALLATION TRACK (Surface mounted/Suspended)

Dimension	COLOR
L1000xW41xH72.7mm	Black
L1500xW41xH72.7mm	White
L2000xW41xH72.7mm	
custom cut (NON-DIM/DALI DIM)	



TRACK ADAPTER

Dimension	COLOR
67.8x39x37.8mm (Wire length 250mm)	Black
	White



TRACK ADAPTER(For corner connection)

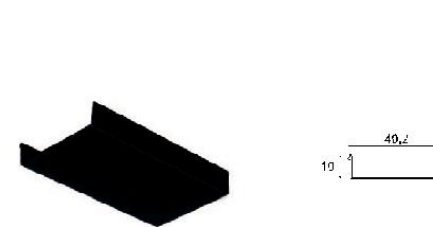
Dimension	COLOR
67.8x39x37.8mm (Wire length 350mm)	Black
	White



POWER ADAPTER

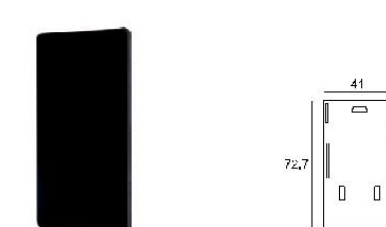
Dimension	COLOR
67.8x39x37.8mm	Black
	White

2. Regular Accessories



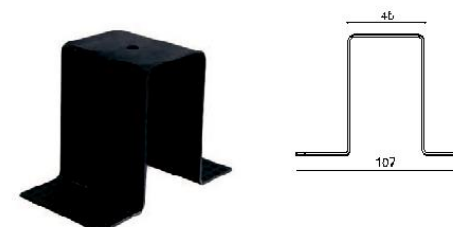
BLIND COVER

Dimension	COLOR
40.2x10x100mm	Black
40.2x10x150mm	White
40.2x10x200mm	



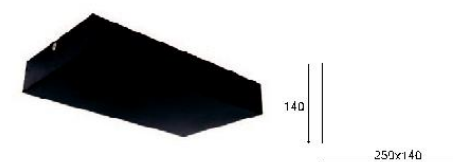
END-CAP

Dimension	COLOR
41x72.7mm	Black
	White



INSTALLATION TRACK (Trimless)

Dimension	COLOR
L107xW46xH74mm	Black
	White



TRANSFORMER MOUNTING BOX

Dimension	COLOR
250x140x40mm	Black
	White



SUSPENDED FITTING

Dimension	COLOR
1000mm	Chrome



LED CONVERTER EXTERN

48V NON-DIM	
100W	L129xW97xH30mm
150W	L159xW97xH30mm
200W	L215xW115xH30mm
350W	L215xW115xH30mm

Trimless Instruction:

