

INDOOR PRODUCT

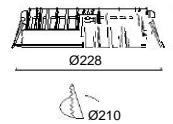
LOW PROFILE LED DOWNLIGHT SERIES

WN46104

Max 24W/35W LED



Light source:SMD LED 2835 21W
 Beam angle: 110°
 Color temperature: 3000K/4000K/5000K
 Light output:2000LM/2200LM/2400LM
 Color rendering index: Ra ≥ 85
 Operating temperature: -20°C~ +40°C
 Rated life hours: 30,000 - 50,000H
 LED driver (Remote): (CE)
 Input: 100-240V AC 50/60Hz
 LED-current: 700mA
 Power consumption:Max 24W

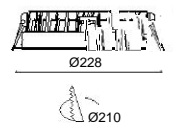


WN46104L

Max 24W LED



Segmented dimming can 3000K / 4000K / 5000K,three kinds of color temperature exchange with night light function.

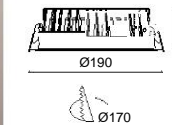


WN46103

Max 19W LED



Light source:SMD LED 2835 17W
 Beam angle: 110°
 Color temperature: 3000K/4000K/5000K
 Light output:1453LM/1603LM/1753LM
 Color rendering index : Ra ≥ 80
 Operating temperature: -20°C~ +40°C
 Rated life hours: 30,000 - 50,000H
 LED driver (Remote): (CE)
 Input: 100-240V AC 50/60Hz
 LED-current: 700mA
 Power consumption :Max 19W

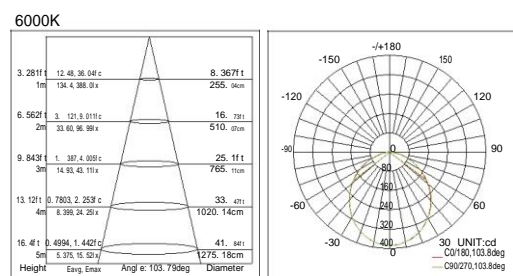
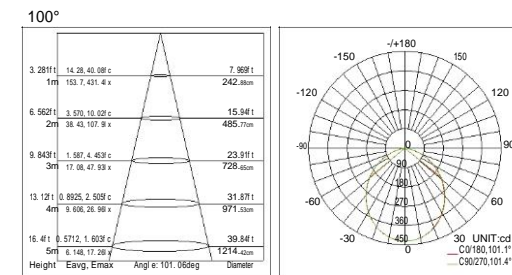
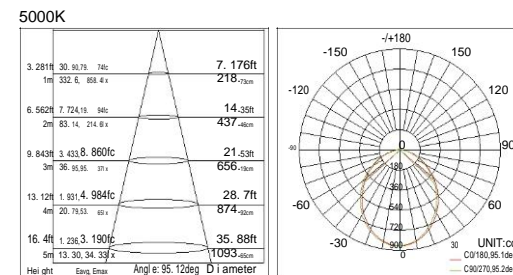
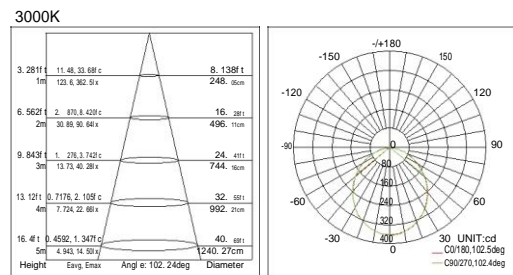
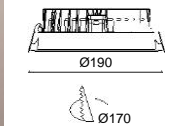


WN46103L

Max 19W LED



Segmented dimming can 3000K / 4000K / 5000K,three kinds of color temperature exchange with night light function.

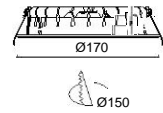


WN46173

Max 15W LED



Light source:SMD LED 2835 13W
 Beam angle: 110°
 Color temperature: 3000K/4000K/5000K
 Light output:1286LM/1411LM/1511LM
 Color rendering index: Ra ≥ 80
 Operating temperature: -20°C~ +40°C
 Rated life hours: 30,000 - 50,000H
 LED driver (Remote): (CE)
 Input: 100-240V AC 50/60Hz
 LED-current : 700mA
 Power consumption :Max 15W

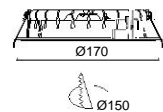


WN46173L

Max 15W LED



Segmented dimming can 3000K / 4000K / 5000K,three kinds of color temperature exchange with night light function.

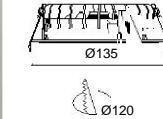


WN46172

Max 13W LED



Light source:SMD LED 2835 11W
 Beam angle: 110°
 Color temperature: 3000K/4000K/5000K
 Light output:809LM/959LM/1109LM
 Color rendering index : Ra ≥ 80
 Operating temperature: -20°C~ +40°C
 Rated life hours: 30,000 - 50,000H
 LED driver (Remote): (CE)
 Input: 100-240V AC 50/60Hz
 LED-current : 700mA
 Power consumption:Max 13W

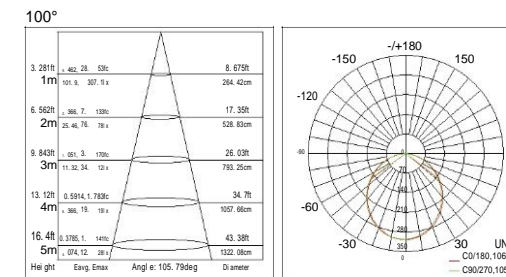
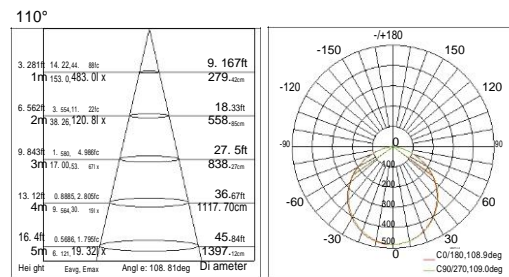
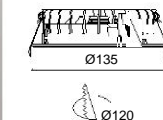


WN46172L

Max 13W LED



Segmented dimming can 3000K / 4000K / 5000K,three kinds of color temperature exchange with night light function.

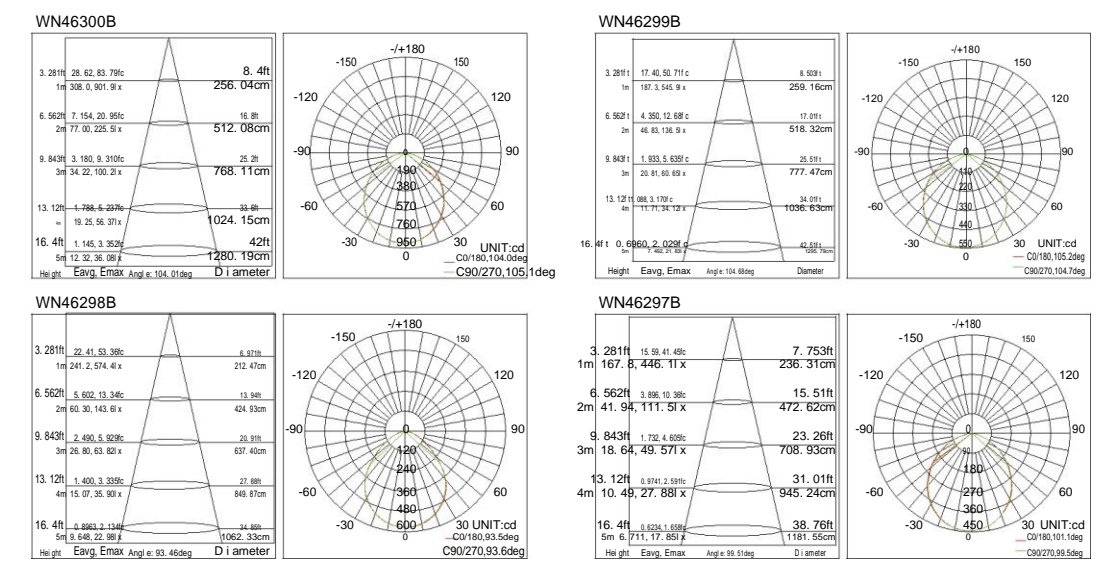


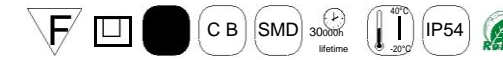


| MODEL: | WN46300B | WN46299B | WN46298B | WN46297B | WN46296B |
|-------------------------|---------------------|----------|----------|----------|----------|
| Power consumption: | Max 24W | Max 19W | Max 15W | Max 13W | Max 13W |
| Rated life hours: | 3000h | | | | |
| Beam angle: | 110° | | | | |
| Light output: 3000K | 2330LM | 1637LM | 1247LM | 1078LM | 1061LM |
| 4000K | 2433LM | 1723LM | 1311LM | 1130LM | 1112LM |
| 5000K | 2540LM | 1814LM | 1379LM | 1184LM | 1165LM |
| Color rendering index : | Ra ≥ 80 | | | | |
| Operating temperature: | -20°C~ +40°C | | | | |
| Input: | 220-240V AC 50/60Hz | | | | |
| LED-current: | 700mA | 700mA | 350mA | 350mA | 350mA |
| LED driver (Remote): | (CE) | | | | |

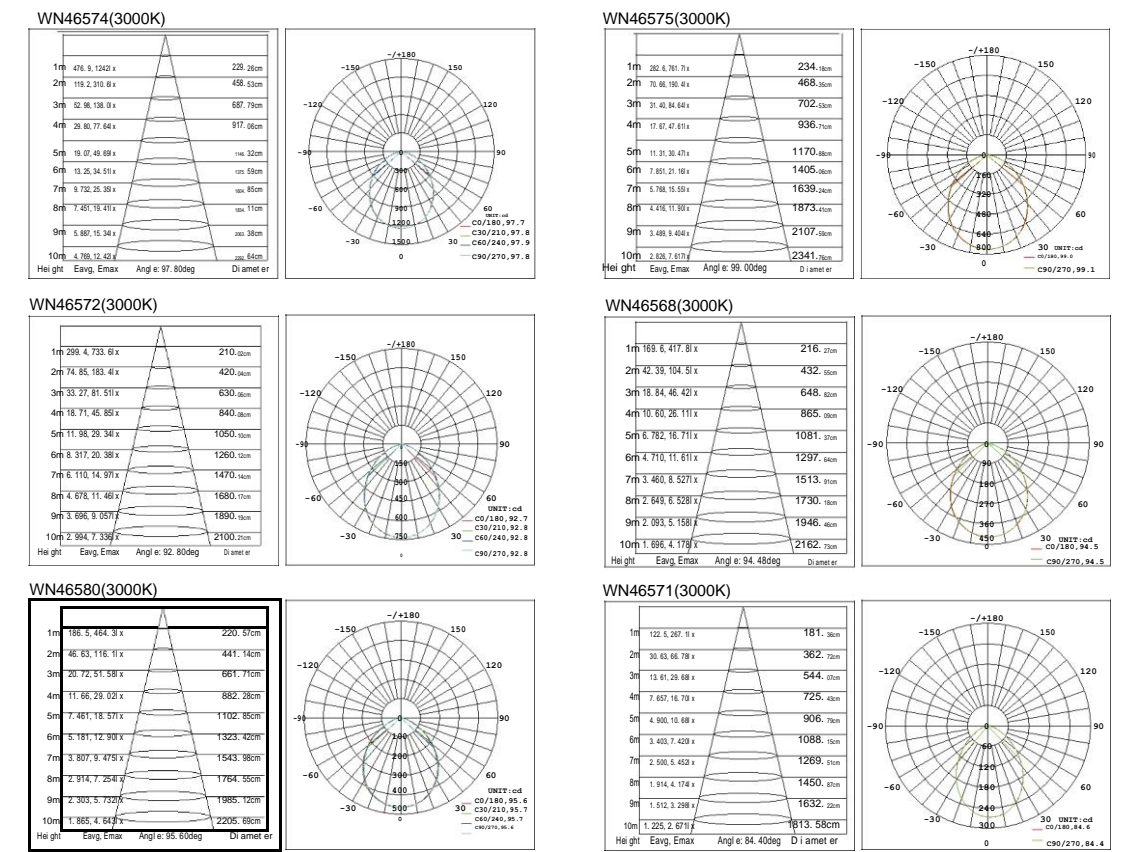
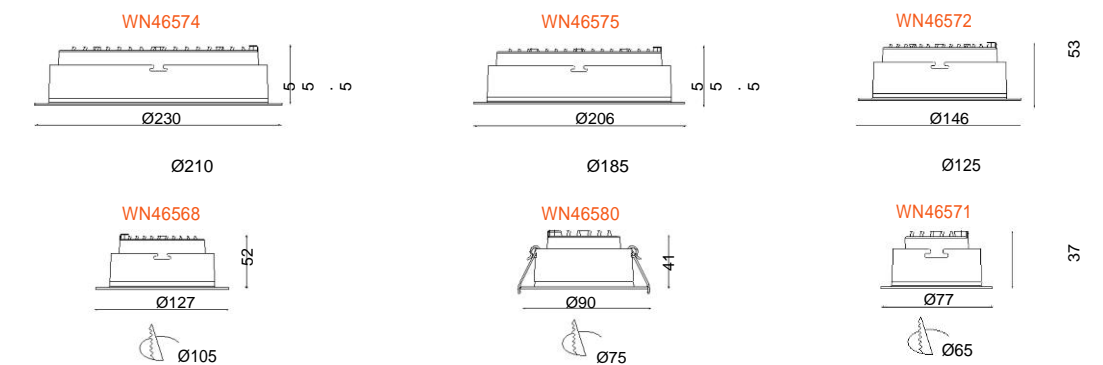


LED ultra thin down light, ultra thin molding design, handy, simple and easy to install. The anti-glare design makes the person feel comfortable. This kind of light adopts frosted acrylic diffuser of high light transmittance. Furthermore, the luminous flux can reach at 95Lm/W.

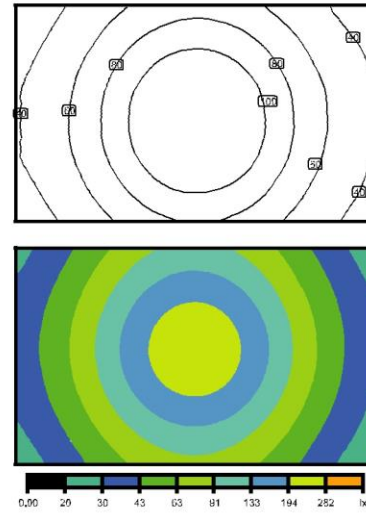
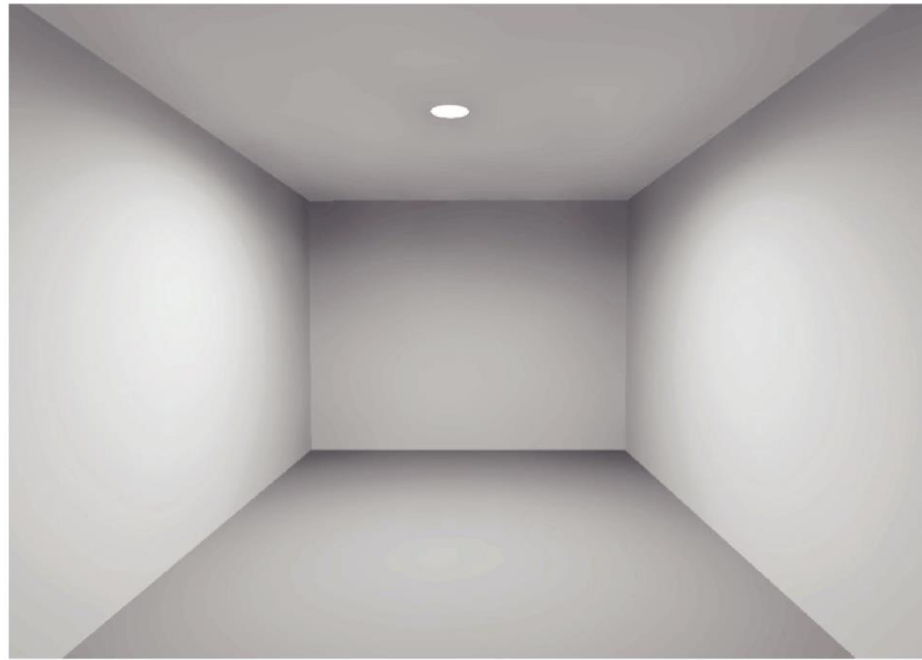




| MODEL : | WN46574 | WN46575 | WN46572 | WN46568 | WN46580 | WN46571 |
|-------------------------|---------------------|---------|---------|---------|---------|---------|
| Power consumption : | Max 35W | Max 25W | Max 18W | Max 12W | Max 7W | Max 7W |
| Rated life hours : | SMD LED | | | | | |
| Beam angle : | 100° | | | | | |
| Light output : 3000K | 2905LM | 1816LM | 1573LM | 1020LM | 820LM | 507LM |
| 4000K | 2938LM | 1945LM | 1596LM | 1080LM | 860LM | 599LM |
| 6000K | 2980LM | 1880LM | 1630LM | 1120LM | 902LM | 562LM |
| Color rendering index : | Ra ≥80 | | | | | |
| Operating temperature : | -20°C~+40°C | | | | | |
| Input : | 220-240V AC 50/60Hz | | | | | |
| LED-current: | 700mA | 600 mA | 500mA | 300mA | 300 mA | 300 mA |
| LEDdriver(Remote) : | (CE) | | | | | |



LED ultra thin down light, ultra thin molding design, handy, simple and easy to install. The anti-glare design makes the person feel comfortable. This kind of light adopts a frosted acrylic diffuser of high light transmittance. Furthermore, the luminous flux can reach at **80Lm/W**. IP54 anti-fog protection grade design is suitable for indoor environmental applications.

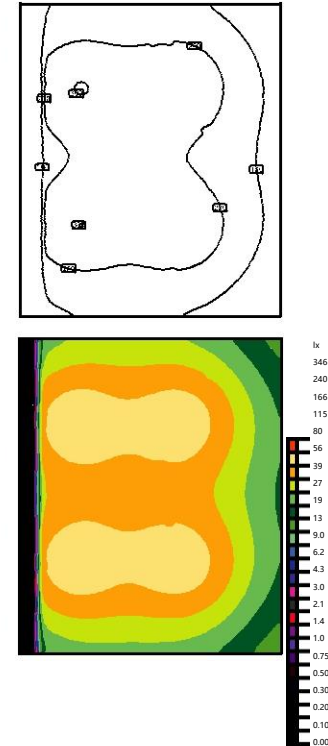


LIGHTING EXAMPLE

Power consumption 35W
 Room dimensions 6x3x2.5m
 Workplane Height 0.8m



WN4657
4



LIGHTING EXAMPLE

Power consumption 25W
 Room dimensions 7x5x2.5m
 Workplane Height 0.8m



WN4657
5

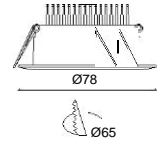


WN1676

Max 7W LED



Light source: SMD LED 2835 6W
 Beam angle: 110°
 Color temperature: 3000K/4000K/5000K
 Light output: 292LM/327LM/362LM
 Color rendering index: Ra ≥ 80
 Operating temperature: -20°C~ +40°C
 Rated life hours: 30,000 - 50,000H
 LED driver (Remote): (CE)
 Input: 100-240V AC 50/60Hz
 LED-current : 560mA
 Power consumption: Max 7W

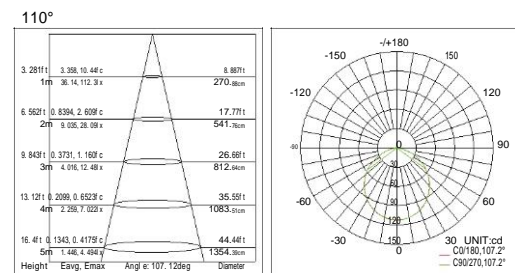
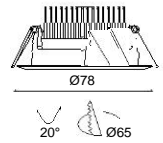


WN4666

Max 7W LED



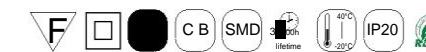
Light source: SMD LED 2835 6W
 Beam angle: 110°
 Color temperature: 3000K/4000K/5000K
 Light output: 490LM/525LM/560LM
 Color rendering index: Ra ≥ 80
 Operating temperature: -20°C~ +40°C
 Rated life hours: 30,000 - 50,000H
 LED driver (Remote): (CE)
 Input: 100-240V AC 50/60Hz
 LED-current : 560mA
 Power consumption: Max 7W



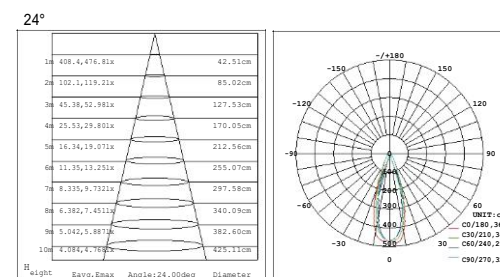
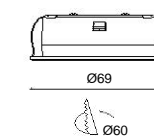


WN16536

Max 3W LED



Light source: SMD LED 2835 3W
 Beam angle: 24°
 Color temperature: 3000K/4000K/6000K
 Light output: 292LM/327LM/362LM
 Color rendering index: Ra ≥ 80
 Operating temperature: -20°C~ +40°C
 Rated life hours: 30,000 - 50,000H
 LED driver (Remote): (CE)
 Input: 220-240V AC 50/60Hz
 LED-current : 228V/12mA
 Power consumption: Max 3W



WN16535

Max 3W LED



Light source: SMD LED 2835 3W
 Beam angle: 110°
 Color temperature: 3000K/4000K/6000K
 Light output: 292LM/327LM/362LM
 Color rendering index: Ra ≥ 80
 Operating temperature: -20°C~ +40°C
 Rated life hours: 30,000 - 50,000H
 LED driver (Remote): (CE)
 Input: 220-240VAC 50/60Hz
 LED-current : 228V/12mA
 Power consumption: Max 3W

