

OUTDOOR PROWINDUCT

WATERPROOF BATTEN SERIES



Lamp body(Without light)

Suggest light source:



Item No.	Dimension			ProWNUct	Voltage	Power	Luminous	CCT	CRI
	L	W	H						
CWP218DSL	656mm	107mm	72mm	T8 tube light	AC220~240V	2x9W	1400lm	3000K/6500K	Ra≥80
CWP236DSL	1256mm	107mm	72mm	T8 tube light	AC220~240V	2x18W	3000lm	3000K/6500K	Ra≥80

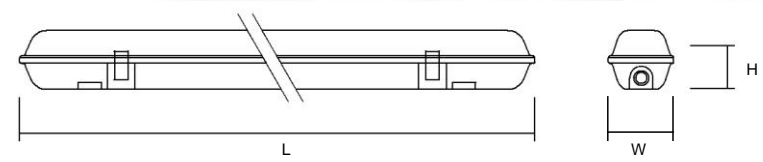


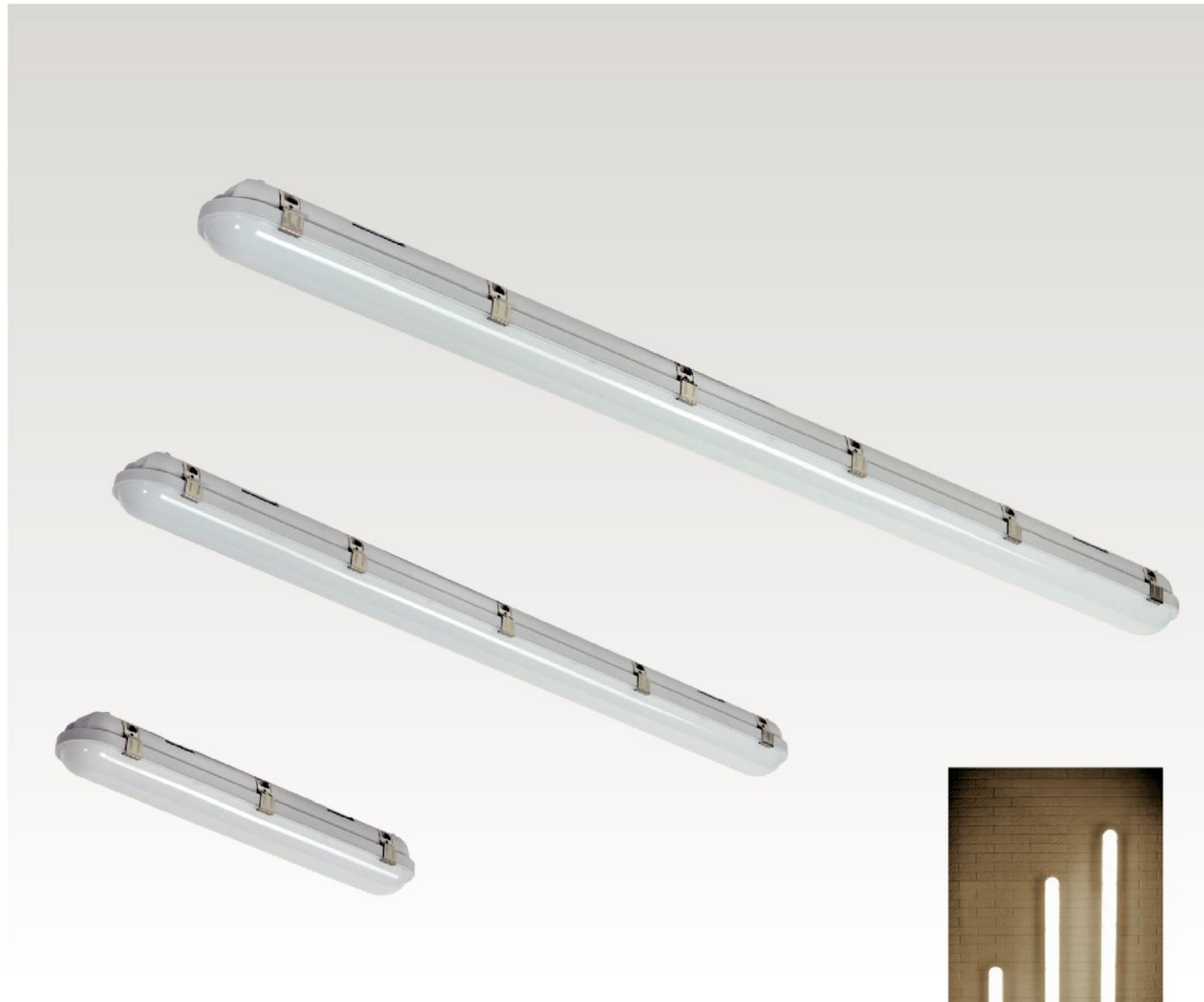
Lamp body(Without light)

Suggest light source:



Item No.	Dimension			ProWNUct	Voltage	Power	Luminous	CCT	CRI
	L	W	H						
CWP218DSL	656mm	107mm	72mm	T8 tube light	AC220~240V	1x9W	1400lm	3000K/6500K	Ra≥80
CWP236DSL	1256mm	107mm	72mm	T8 tube light	AC220~240V	1x18W	3000lm	3000K/6500K	Ra≥80

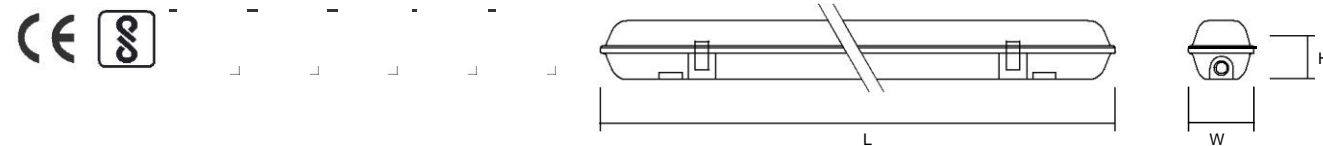


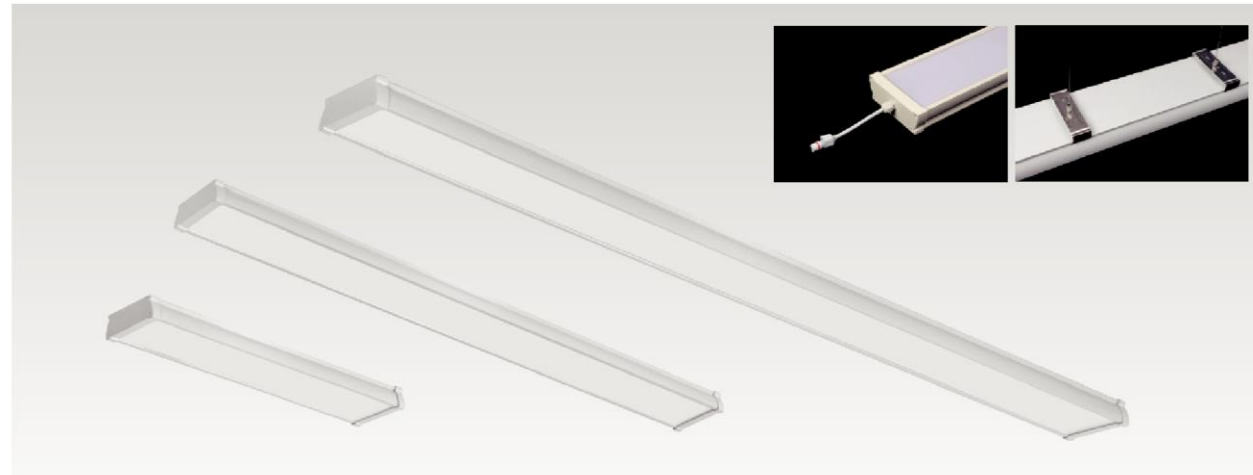


WNDZ00014 / WNDZ00015 / WNDZ00016



Item No.	Dimension			Voltage	Power	Light output	CCT	CRI	PF	Beam Angle
	L	W	H							
WNDZ00014	600mm	95mm	80mm	AC220-240V	20W	2000lm	4000K/5000K/6000K	Ra≥80	>0.9	180°
WNDZ00015	1200mm	95mm	80mm	AC220-240V	40W	4000lm	4000K/5000K/6000K	Ra≥80	>0.9	180°
WNDZ00016	1500mm	95mm	80mm	AC220-240V	60W	6000lm	4000K/5000K/6000K	Ra≥80	>0.9	180°

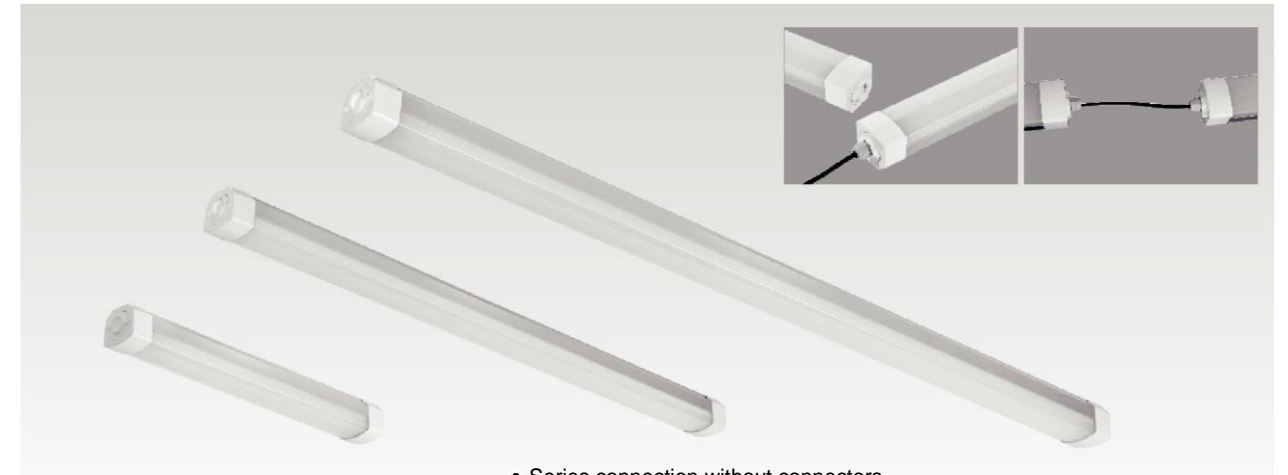




- Built-in isolated driver
- VDE approved waterproof connector
- Emergency/ Dimmable/ Sensor (optional)



Item No.	Dimension			Voltage	Power	Light output	CCT	CRI	PF	Beam Angle
	L	W	H							
WNDZ00001	600mm	125mm	45mm	AC100-240V	18W	1800lm	4000K/5000K/6000K	Ra≥80	>0.9	90°
WNDZ00002	1200mm	125mm	45mm	AC100-240V	36W	3600lm	4000K/5000K/6000K	Ra≥80	>0.9	90°
WNDZ00003	1500mm	125mm	45mm	AC100-240V	60W	6000lm	4000K/5000K/6000K	Ra≥80	>0.9	90°



- Series connection without connectors for 2000W lamps(20pcs 100W lamps)
- Series connection with 15-20pcs lamps (Power: 1500-2000W)



Item No.	Dimension			Voltage	Power	Light output	CCT	CRI	PF	Beam Angle
	L	W	H							
WNDZ00011	600mm	77mm	70mm	AC220-240V	20W	2000lm	4000K/5000K/6000K	Ra≥80	>0.9	180°
WNDZ00012	1200mm	77mm	70mm	AC220-240V	40W	4000lm	4000K/5000K/6000K	Ra≥80	>0.9	180°
WNDZ00013	1500mm	77mm	70mm	AC220-240V	60W	6000lm	4000K/5000K/6000K	Ra≥80	>0.9	180°



- Customized 0.3-2. 4m tube



Item No.	Dimension			Voltage	Power	Light output	CCT	CRI	PF	Beam Angle
	L	W	H							
WNDZ00006	600mm	63mm	50mm	AC220-240V	18W	1800lm	4000K/5000K/6000K	Ra≥80	>0.9	180°
WNDZ00007	1200mm	63mm	50mm	AC220-240V	36W	3600lm	4000K/5000K/6000K	Ra≥80	>0.9	180°
WNDZ00008	1500mm	63mm	50mm	AC220-240V	54W	5400lm	4000K/5000K/6000K	Ra≥80	>0.9	180°



- Customized 0.3-2. 4m tube



Item No.	Dimension			Voltage	Power	Light output	CCT	CRI	PF	Beam Angle
	L	W	H							
WNDZ00017	600mm	65mm	55mm	AC100-240V	18W	1800lm	4000K/5000K/6000K	Ra≥80	>0.9	180°
WNDZ00018	1200mm	65mm	55mm	AC100-240V	36W	3600lm	4000K/5000K/6000K	Ra≥80	>0.9	180°
WNDZ00019	1500mm	65mm	55mm	AC100-240V	45W	4500lm	4000K/5000K/6000K	Ra≥80	>0.9	180°

