

LED CHIP

HEAT SINK

REFLECTOR

SECONDARY OPTICAL PROCESSOR

LAMP BODY

WATERPROOF RUBBER PLUG

COVER



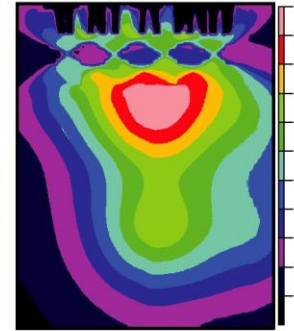
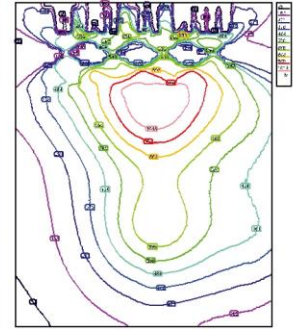
IP44

UGR<19

AMPHI series covering 15 ~ 35W power series deep anti-glare down light. Through the precise control of the light design, and increase the secondary anti-glare reflector design, resulting in high light efficiency uniform beam, the anti-glare UGR <19, to achieve maximum visual comfort. Modular design can be freely selected according to the needs of different surface treatment of the secondary optical reflector, IP44 anti-fog protection class design for indoor environmental

applications.

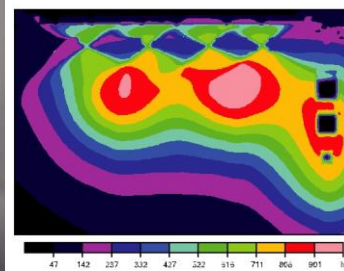
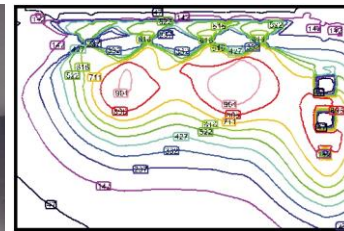




LIGHTING EXAMPLE

Power consumption  
Room dimensions  
Workplane Height

15W/25W/35W  
4x5x2.8m  
0.8m



LIGHTING EXAMPLE

Power consumption  
Room dimensions  
Workplane Height

15W/25W/35W  
4x5x2.8m  
0.8m

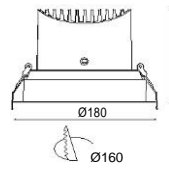


WN46488

Max 35W LED

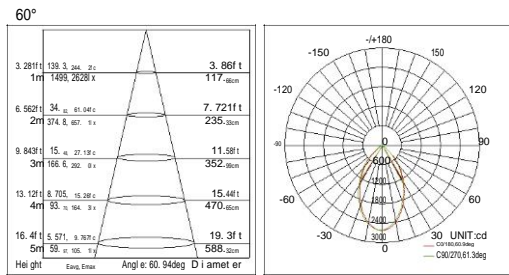


Light source: COB LED 31W  
 Beam angle: 60°  
 Color temperature: 3000K/4000K/5000K  
 Light output: 3130LM/3160LM/3200LM  
 Color rendering index: Ra ≥ 80  
 Operating temperature: -20°C~ +40°C  
 Rated life hours: 30,000 - 50,000H  
 LED driver (Remote): (CE)  
 Input: 100-240V AC 50/60Hz  
 LED-current : 800mA  
 Power consumption : Max 35W



1 2 2

REPLACEABLE PARTS

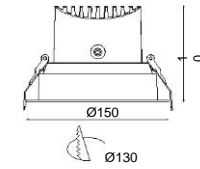


WN46487

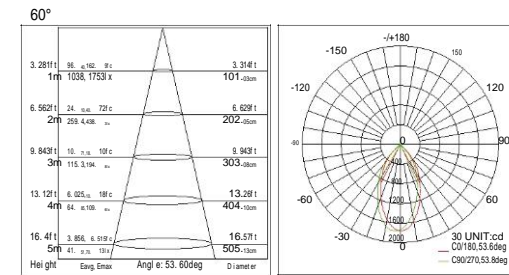
Max 25W LED



Light source: COB LED 19.5W  
 Beam angle: 60°  
 Color temperature: 3000K/4000K/5000K  
 Light output: 2174LM/2210LM/2260LM  
 Color rendering index: Ra ≥ 80  
 Operating temperature: -20°C~ +40°C  
 Rated life hours: 30,000 - 50,000H  
 LED driver (Remote): (CE)  
 Input: 100-240V AC 50/60Hz  
 LED-current : 600mA  
 Power consumption : Max 21W



REPLACEABLE PARTS

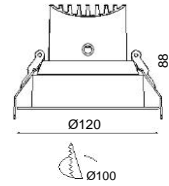


WN46486

Max 15W LED



Light source: COB LED 12.8W  
 Beam angle: 60°  
 Color temperature: 3000K/4000K/5000K  
 Light output: 1083LM/1120LM/1180LM  
 Color rendering index : Ra ≥ 80  
 Operating temperature: -20°C~ +40°C  
 Rated life hours: 30,000 - 50,000H  
 LED driver (Remote): (CE)  
 Input: 100-240V AC 50/60Hz  
 LED-current : 350mA  
 Power consumption :Max 15W



REPLACEABLE PARTS



□ WHITE    ■ SILVER    ■ CHROME

